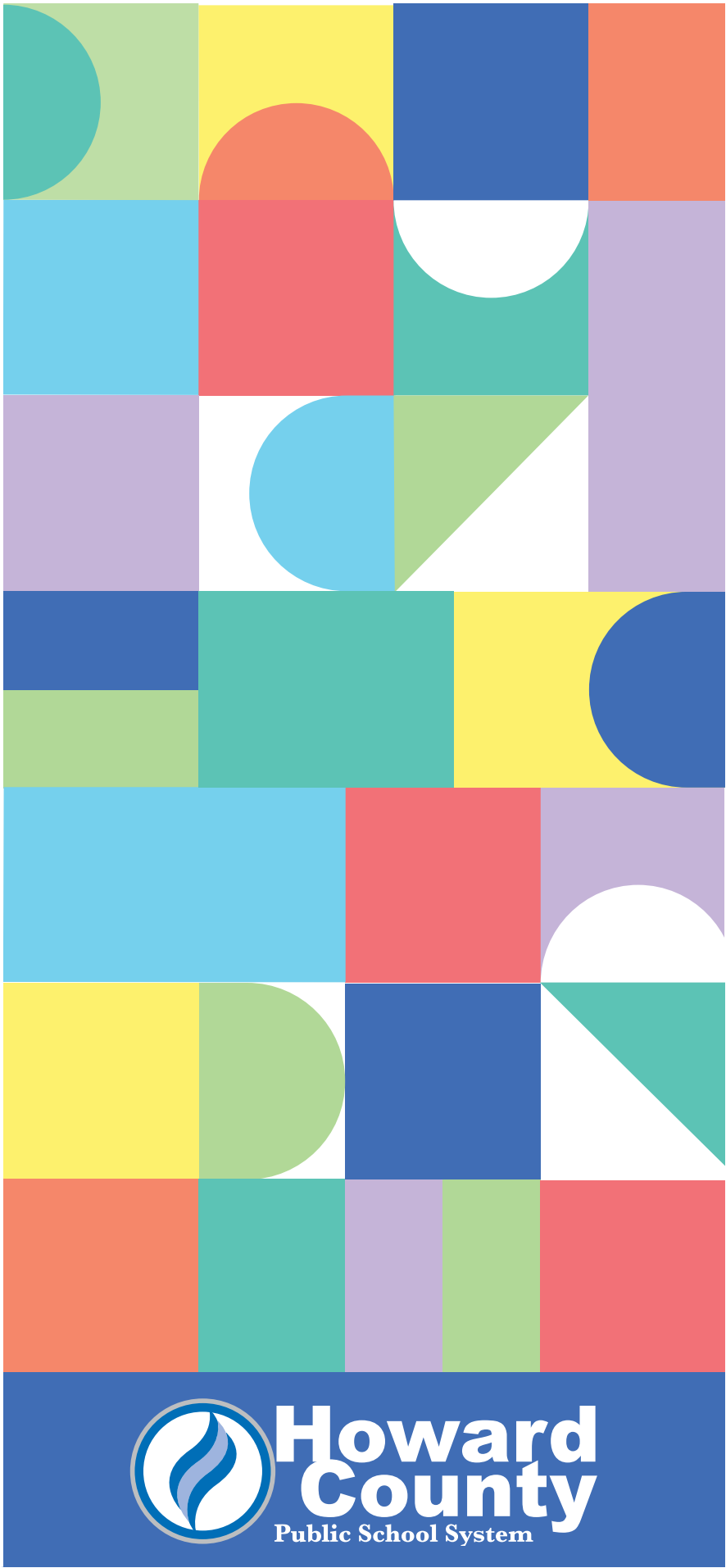


2021–22  
ANNUAL  
REPORT

EDUCATIONAL PARTNERSHIPS





## A Message from the Superintendent

Our school system would not be where it is today without the support of our community partners. Your unwavering dedication and commitment are proof that education is a valued and treasured community asset in Howard County.

We know there is no single answer or program that will make every child successful and that it takes a combination of strategies and efforts. Partners play a vital role in supporting these efforts, whether it is donating school supplies or technology, cultivating new opportunities for students and staff, contributing to the school system's educational foundation or lending time and expertise.

I look forward to our continued collaboration to enhance the quality of classroom instruction, support social-emotional learning and commit to every student achieving.

Thank you for your partnership. You are our treasured asset.

Sincerely,

Michael J. Martirano, Ed.D.

## What's INSIDE

- 4 Well Rounded Education
- 6 Academic Engagement
- 8 Career Exploration
- 10 Success for Life
- 12 2021–22 Year in Review
- 14 At-Large Partners
- 16 School Partners
- 21 Gifted and Talented Program
- 22 Career and Technical Education
- 25 Student Well-Being
- 26 Special Education
- 26 Staff Discount Program
- 27 Volunteer Opportunities

The Educational Partnerships Annual Report reflects partnerships active between July 1, 2021 and June 30, 2022.

If there are any errors or omissions, please accept our apologies and inform the Partnerships Office at [partnerships@hcpss.org](mailto:partnerships@hcpss.org).



## The BOARD OF EDUCATION of Howard County 2021–22



Vicky Cutroneo  
Chair



Antonia Watts  
Vice Chair



Christina  
Delmont-Small



Yun Lu



Jennifer Swickard  
Mallo



Jolene Mosley



Chao Wu



Peter Banyas  
Student Member

# EDUCATIONAL PARTNERSHIPS 2021–22 Annual Report

Education is the pathway for students to reach their highest potential. A high quality education ensures that students are college, career, and life ready. It encompasses preparing students to be thoughtful citizens who can make connections across disciplines, practice innovative thinking and offer solutions to solve social problems.

HCPSS combines rigorous content and instruction with opportunities for accelerated learning to provide the foundation for students to achieve the college and career-readiness attributes necessary to thrive in a global and competitive world. At the same time, students have many opportunities to explore a wide variety of interests by participating in theater, music, visual arts, physical education, athletics and student clubs. Through this diversity of experiences, students gain essential skills and abilities including creativity, problem solving, teamwork and effective communications.

Community partners play an important role at every step of this process by helping students acquire knowledge, abilities and confidence for success throughout life wherever their path may lead. This Educational Partnerships Annual Report highlights the vital role partners play in engaging students to discover their talents as they start their pathway to lifelong learning.

# Well Rounded Education

HCPSS partners with the community to provide a wide variety of opportunities to support students in achieving their dreams. Unsurpassed community collaboration strengthens HCPSS instruction, provides engaging activities, bolsters student performance and ensures the well-being of students and staff members. Partners assist struggling students to master critical skills; while in others, they open a window to an unexpected career path or spark a commitment to a lifelong passion.

**22 years**  
Prepare for Success  
providing  
**1,000s** of  
backpacks full of  
school supplies



Cedar Lane students learn work skills assembling **850** Prepare for Success backpacks each year

**“We leverage community partnerships to fill gaps and amplify services and opportunities for students.”**

—Superintendent Martirano

**\$5,957,000**  
ESTIMATED ANNUAL  
VALUE OF SUPPORT

**1,271**  
PARTNERS



**56%**  
Business



**23%**  
Nonprofit



**9%**  
Education



**8%**  
Government

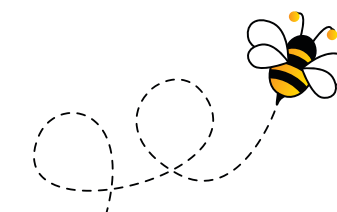


**4%**  
Faith



**460+** organizations  
offer high school  
student internships

**7th year**  
HCPSS named Best  
Communities for Music  
Education thanks to  
support of **26** partners



**1,500** ecstatic fifth grade students test their knowledge of **10** books at  
Howard County Library System's Battle of the Books at Merriweather Post Pavilion

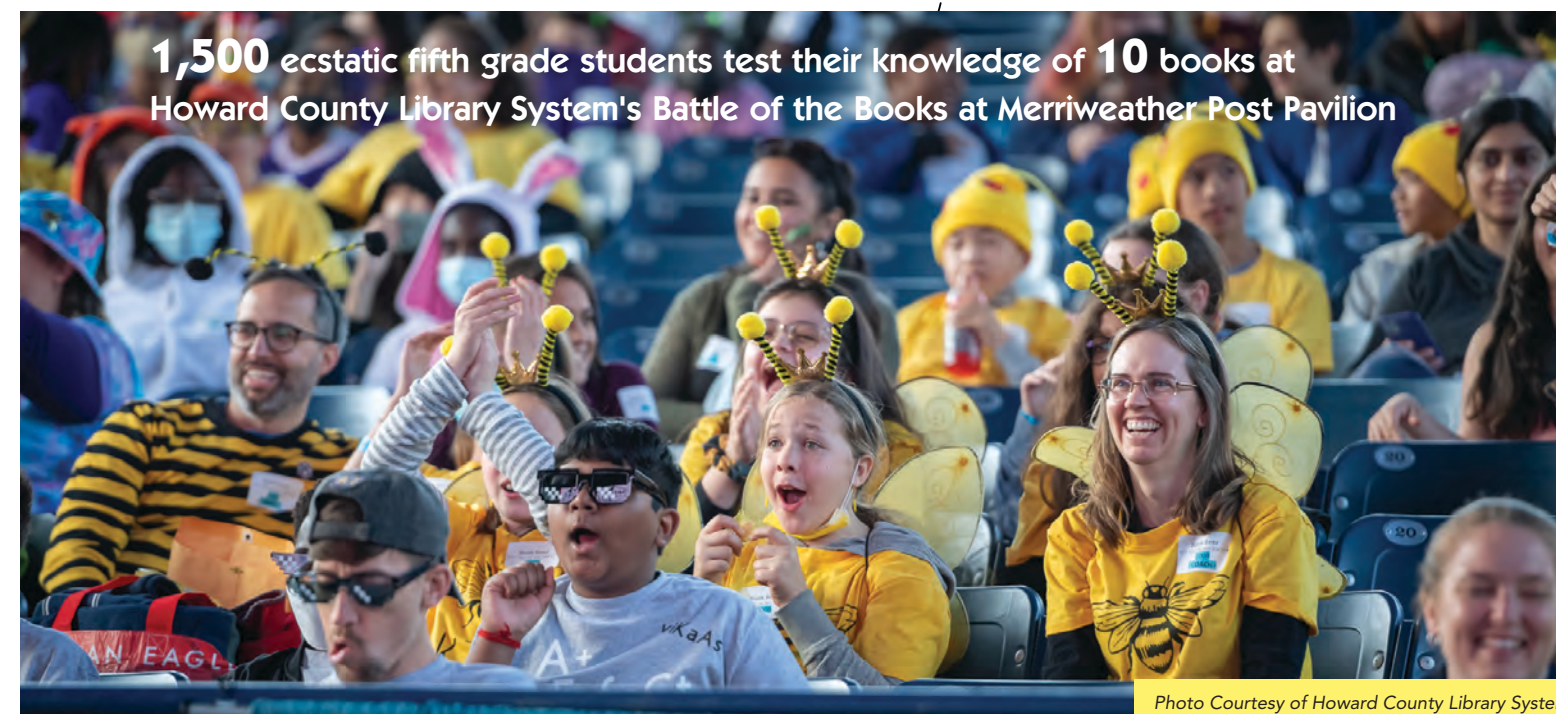


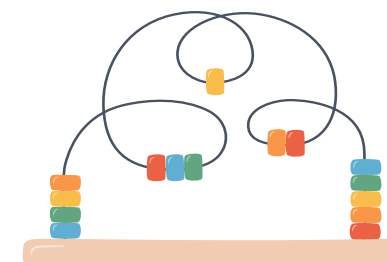
Photo Courtesy of Howard County Library System

# Academic Engagement

Engagement is key to student learning and success. HCPSS recognizes that achievement targets are not ends in themselves, but rather are milestones on each student's path to lifelong prosperity, productivity and personal satisfaction. Partners collaborate with educators to inspire students by connecting real-world experiences to the classroom.



Technology links 300 Home and Hospital students to the classroom, including robots funded by Bright Minds Foundation



**"For 35+ years, students have been learning to care for their kids, while getting the education they need to graduate and move further in life."**

—Kazandra Anderson  
Teen Parenting Childcare  
Program Director



# Career Exploration

HCPSS prepares students for a wide range of careers requiring varying levels of education, from high school diplomas to four-year college degrees and beyond. Students have the opportunity to participate in career-focused learning through classroom instruction and site-based work experiences, sometimes earning industry certifications and/or college credit. Industry experts shape tomorrow's workforce by mentoring students with professional guidance that can prove invaluable to future success.



Gifted & Talented  
internships at  
**120** businesses give  
students hands-on  
work experience



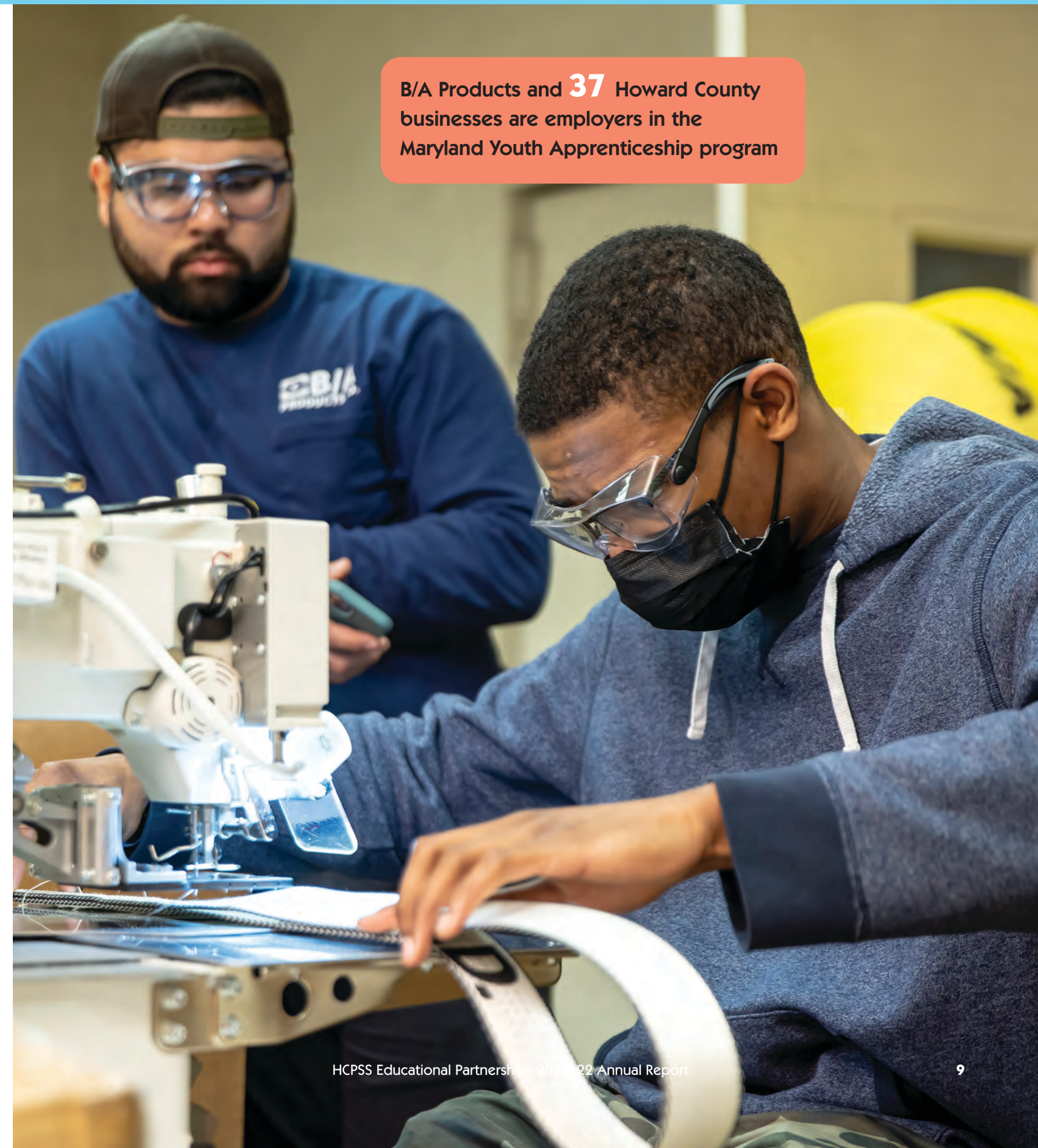
U.S. Army and Air Force  
Junior ROTC program  
prepares **500** students for  
leadership roles and service

**1,000+** students earn  
college credit through  
JumpStart dual  
enrollment program;



**21** students graduated  
from high school in 2022  
with a college degree

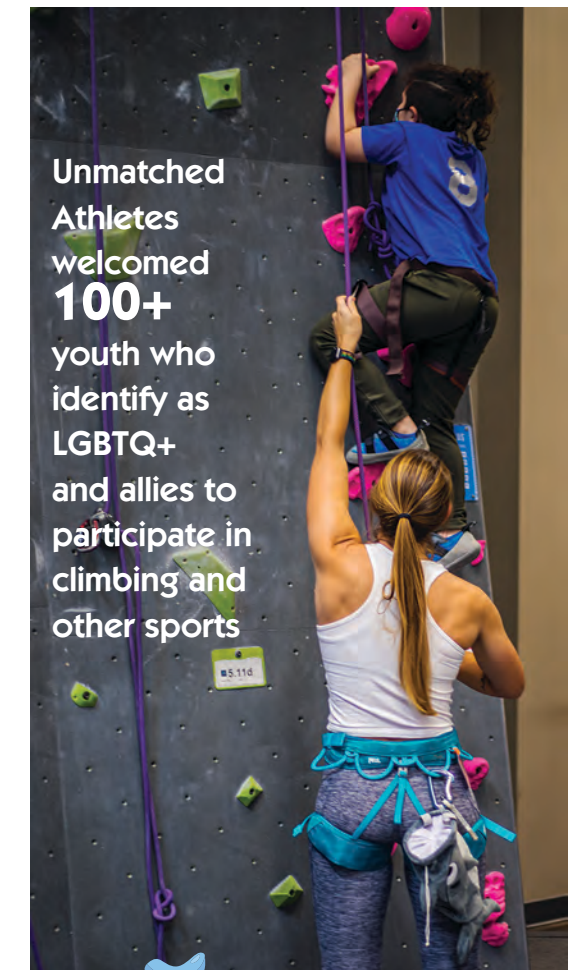
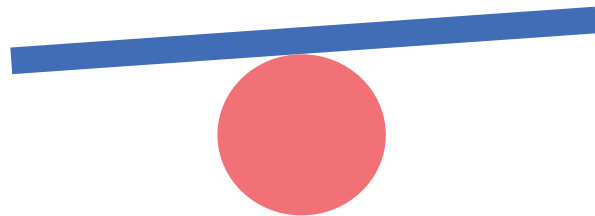
Grow your own!  
Many new HCPSS  
teachers come from  
**15** partnerships with  
Maryland universities/  
colleges



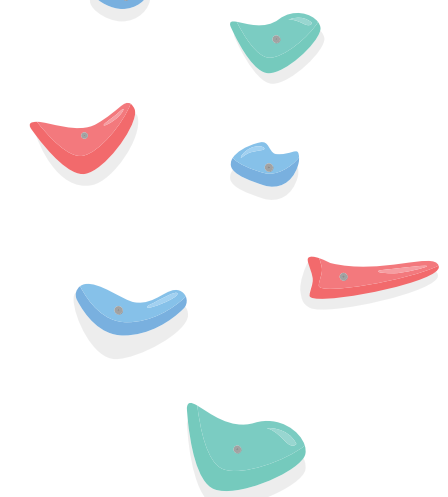
B/A Products and **37** Howard County  
businesses are employers in the  
Maryland Youth Apprenticeship program

# Success for Life

Living a balanced life is vital for personal health and well-being in a world that is increasingly fast-paced, tension-filled and unsettled. Athletics, the arts and extracurricular activities give students opportunities to foster a variety of interests and wellness habits. HCPSS and community partners introduce students to healthy lifestyle choices and the importance that these choices will have on their lifelong health and well-being.



Howard County Library System A+ student  
accounts and a new PopUp Library made it easy  
for students to borrow **80,337** books last year



# 2021–2022 Year in Review



Environmental partners offered a Student Climate Change Institute for students to learn from climate experts



Thrifty Teacher partnership with Laurel Woods Elementary supports positive behavior initiatives and school supply drives



HCPSS is a proud participant in the Howard County Arts Council annual ARTsites outdoor sculpture program



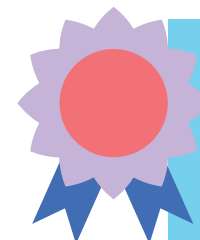
Through a public-private partnership, the Jim Rouse Theatre at Wilde Lake High is home to the Columbia Orchestra and 40+ performance groups each year



Community Allies of Rainbow Youth (CARY) founder Ying Matties received the Friends of Education Award for her work to ensure that each student feels valued



Bright Minds Foundation hosted a fun-filled event to thank donors and community leaders for their unwavering support of HCPSS students and staff



Students celebrate graduation from Project SEARCH, a program with Howard County government for students with disabilities transitioning to competitive employment



# AT-LARGE Partners

At-Large partnerships are relationships that support the Howard County Public School System’s systemwide goals. Many At-Large partners also have individual partnerships with schools of their choice. At-Large partners for the 2021–22 school year were:

African American Community Roundtable  
African Art Museum of Maryland  
Aida Bistro  
American Association for the Advancement of Science  
American Red Cross  
Apple Ford  
Arts for Learning Maryland  
Association of Community Services of Howard County  
AYRA Baseball and Softball  
Bach to Rock Fulton  
Baltimore Area Community Health Services (BACHS)  
Baltimore Brass Co.  
Baltimore Concert Opera  
Baltimore Orioles  
Baltimore Ravens  
Beth Shalom Congregation  
BGE  
Bicycling Advocates of Howard County  
Bright Minds Foundation  
Brighter Hope Wellness Center  
Brunswick Columbia Lanes  
Building Families for Children  
C-SPAN  
Candlelight Concert Society  
Center for Children  
Center for Civic Education  
Chapelgate Christian Academy  
Chesapeake Bay Foundation  
Chesapeake Bay Trust  
Chesapeake Shakespeare Company  
Children’s National Medical Center  
Chin Association of Maryland (CAM)  
Chinese American Parent Association of Howard County  
Chinese Language School of Columbia  
Clarity Audiology & Hearing Solutions  
Clarks ACE Hardware  
Collaborative Counseling Center  
Columbia Amateur Radio Association  
Columbia Archives  
Columbia Art Center  
Columbia Association  
Columbia Association, Supreme Sports Club  
Columbia Baptist Fellowship  
Columbia Festival of the Arts  
Columbia Orchestra  
Comcast  
Community Action Council of Howard County  
Community Allies of Rainbow Youth  
Compass  
Conexiones  
Congruent Counseling Services  
Continental Societies, Southeastern Howard/Laurel Chapter  
Coppin State University  
Crossroads Psychological Associates  
Cured|18th & 21st

Custom Media Options  
Davis, Agnor, Rapaport & Skalny  
Downtown Columbia Arts and Culture Commission  
Drama Learning Center  
Echoes of Nature  
Elite Chiropractic & Sport  
Elkridge Youth Organization  
Ellicott City Rotary Club  
Embassy of Italy in Washington, DC  
Eplee + Associates  
Equity4HC  
Fairway Hills Golf Club, Columbia Association  
Families For Education Improvement  
Feet First Sports  
Fort Meade Alliance  
Girls on the Run of Central Maryland  
Glenelg Country School  
Global Federation of Chinese Business Women, Baltimore Chapter  
Good Beginnings Child Care and Preschool  
Grand Canyon University  
Grassroots Crisis Intervention Center  
Grow and Learn  
HC DrugFree  
Head Start of Howard County, Community Action Council  
HEART  
Hobbit’s Glen Golf Club, Columbia Association  
HoCoAGAST  
HoCoPoLitSo (Howard County Poetry and Literature Society)  
HopeWorks  
Horizon Foundation  
Howard Community College  
Howard Community College Educational Foundation  
Howard Community College, Arts and Humanities Division  
Howard Community College, Division of Continuing Education and Workforce Development  
Howard Community College, Early Childhood Education  
Howard Community College, English and World Languages Division  
Howard Community College, Science and Technology Division  
Howard Community College, Social Sciences/Teacher Education Division  
Howard County Arts Council/  
Howard County Center for the Arts  
Howard County Board of Elections  
Howard County Bureau of Environmental Services  
Howard County Center of African American Culture  
Howard County Chamber of Commerce  
Howard County Chapter of the League of Korean Americans of Maryland  
Howard County Chinese School  
Howard County Circuit Court



**Clemens Crossing Elementary School students participate in the Hour of Code, an annual event to help students broaden their understanding of computer science.**

Howard County Concert Odyssey  
Howard County Conservancy  
Howard County Council  
Howard County Cricket League  
Howard County Department of Community Resources and Services  
Howard County Department of County Administration  
Howard County Department of Fire and Rescue Services  
Howard County Department of Inspections, Licenses and Permits  
Howard County Department of Planning & Zoning  
Howard County Department of Social Services  
Howard County Department of Technology and Communications Services  
Howard County Economic Development Authority  
Howard County Education Association  
Howard County Education Federal Credit Union  
Howard County Family Child Care Association  
Howard County General Hospital, A Member of Johns Hopkins Medicine  
Howard County Health Department  
Howard County Health Department, Bureau of Behavioral Health  
Howard County Health Department, Local Behavioral Health Authority Board  
Howard County Health Department, Opioid Crisis Community Council  
Howard County Heroes  
Howard County Historical Society  
Howard County Human Resources Society

Howard County Human Rights Commission  
Howard County Lacrosse Program  
Howard County Library System  
Howard County Literacy Association  
Howard County Living Farm Heritage Museum  
Howard County Local Children’s Board  
Howard County Office of Child Care  
Howard County Office of Children and Families  
Howard County Office of Children and Families, Child Care Resource Center  
Howard County Office of Community Sustainability  
Howard County Office of Emergency Management  
Howard County Office of Human Rights and Equity  
Howard County Office of Public Information  
Howard County Office of the State’s Attorney  
Howard County Office of Transportation  
Howard County Pickleball Association  
Howard County Police Department  
Howard County Recreation and Parks  
Howard County Sheriff’s Office  
Howard County Striders  
Howard County Summer Theatre  
Howard County Tourism & Promotion  
Howard County Women’s Bar Association  
Howard County Youth Program  
Howard EcoWorks

Howard Soil Conservation District  
Howard University  
HowGirlsCode  
Humanim  
Indian Cultural Association of Howard County  
Indian Origin Network of Howard County (IONHoCo)  
IndiSoft  
Inner Arbor Trust  
Innovations in Education  
IntelliGenesis  
ISAASE (Improving South Asian American Students’ Experiences)  
J.M. Gaske  
James and Anne Robinson Foundation  
Jemicy School  
Jewish Federation of Howard County  
Jewish Museum of Maryland  
Johns Hopkins University Applied Physics Laboratory  
Johns Hopkins University, Peabody Institute  
Jordan Kitt’s Music  
Junior Achievement of Central Maryland  
JustLiving Advocacy  
Kaur Foundation  
KCI Technologies Inc.  
Kenneth M. Klebanow, MD & Associates P.A.  
Kim B. Jones-Fearing, MD  
Kiwanis Club of Ellicott City  
Leaders of Tomorrow Youth Center  
Leadership Howard County  
LeadersLink, Players Philanthropy Fund  
League of Women Voters of Howard County  
Legacy Leadership Environmental Institute (HoLLIE)  
Leidos  
Liberty University  
Lotus Healing Services  
Loyola University Maryland, Department of Speech-Language-Hearing Sciences  
Loyola University Maryland, School of Education  
Luminus Network for New Americans  
M-F Athletic, Everything Track & Field  
MakingChange

ManneqART  
Marathon Kids  
Mary’s Land Farm  
Maryland Agricultural Education Foundation  
Maryland Association for Environmental and Outdoor Education, Green School Program (MAEOE)  
Maryland Center for History and Culture  
Maryland Coalition of Families  
Maryland Council on Economic Education  
Maryland Department of Labor, Licensing and Regulation, Maryland Apprenticeship and Training Program  
Maryland Department of Natural Resources, Project Green Classrooms  
Maryland General Assembly  
Maryland Humanities Council  
Maryland Institute College of Art  
Maryland MESA  
Maryland School for the Deaf, Frederick Campus  
Maryland Science Center  
Maryland State Archives  
Maryland State Department of Education  
Maryland Winds  
McDaniel College  
McDonald’s of Howard County  
McDonald’s, All Saints Road  
McDonald’s, Baltimore National Pike  
McDonald’s, Benson Drive  
McDonald’s, Columbia Mall  
McDonald’s, Cradlerock Way  
McDonald’s, Daybreak Circle  
McDonald’s, Dobbin Road  
McDonald’s, Guilford Road  
McDonald’s, Harpers Farm Road  
McDonald’s, Lisbon Center Drive  
McDonald’s, Maple Lawn  
McDonald’s, Montgomery Road  
McDonald’s, North Ridge Road  
McDonald’s, Pocomoke Avenue  
McDonald’s, Snowden River Parkway  
McDonald’s, Washington Boulevard, Elkridge  
McDonald’s, Washington Boulevard, Jessup  
MdBio Foundation and MdBioLab



**Christ Episcopal Church funded a summer Applerouth SAT test prep program for 35 Oakland Mills High School students.**

Mediation & Conflict Resolution Center (MCRC)  
MedStar Union Memorial  
Orthopaedics and Sports Medicine  
Mental Health Association of Maryland  
Merriweather Lakehouse  
Merriweather Post Pavilion  
Mid-Atlantic Turtle & Tortoise Society  
Mike’s Music  
Milestones Counseling and Consulting Services  
Morgan State University  
MPB Group  
Music & Arts  
Mutiny Pirate Bar and Island Grille  
Myrtle Woods Farm  
NAACP, Howard County Branch  
NAMI Howard County  
Nancy Adams Personnel  
National Institutes of Health, National Institute of Mental Health  
National Security Agency  
Northrop Grumman Corporation  
Notre Dame of Maryland University  
One Love Foundation  
Parents as Teachers  
Patapsco Heritage Greenway  
PATH (People Acting Together in Howard)  
Peiyang Chinese School  
Perfect Generation Ministries  
PFLAG Columbia-Howard County  
Pivot Physical Therapy, Jermor Lane  
Prepare for Success, Community Action Council of Howard County  
Prime Manufacturing Technologies  
Psychiatry Specialties Clinics  
PTA Council of Howard County  
Ready At Five  
Red Branch Theatre Company  
Regional Transportation Agency of Central Maryland  
Restorative Justice Partnership  
Robinson Nature Center, Howard County Recreation and Parks  
Rotary Club of Columbia  
Rotary Club of Columbia Town Center  
Rotary Club of Columbia-Patuxent  
Rotary Club of Elkridge  
Salazar Catering Services/  
Boardroom Café  
Seasons 52  
Sharp’s at Waterford Farm  
Sheppard Pratt  
Shimadzu Scientific Instruments  
Smithsonian American Art Museum  
Speaker Stephanie  
Springboard Community Services  
STEER Tech  
Strathmore  
Sundays At Three  
Sunrise Rotary Club of Ellicott City  
Take Charge Today  
TasteWise Kids  
The Arc of Howard County  
The Business Monthly  
The Council of Elders of the Black Community of Howard County  
The Council on American-Islamic Relations (CAIR)  
The First Tee of Howard County  
The Goddard School, Ellicott City

The Korean Society of Maryland  
The Mall in Columbia  
The National Great Blacks in Wax Museum  
The Timbers at Troy  
The United States Army Band  
"Pershing’s Own"  
The United States Army Field Band  
Therapeutic Connections  
Thrive  
Tides of Change Wellness  
Towson University College of Education  
Towson University College of Health Professions  
Towson University, Fisher College of Science and Mathematics  
Towson University, Towson UTeach  
Trout Unlimited, Trout in the Classroom  
True Chesapeake Oyster Co.  
U.S. Department of Education  
U.S. Food and Drug Administration, Center for Devices and Radiological Health  
UMBC  
UMBC Center for History Education  
UMBC Education Department  
UMBC Martha Ross Center for Oral History  
United States Navy Band  
Universities Space Research Association (USRA)  
University of Maryland College of Computer, Mathematical, & Natural Sciences  
University of Maryland College of Education  
University of Maryland Eastern Shore  
University of Maryland Global Campus, Graduate Education Department  
University of Maryland School of Medicine, Department of Psychiatry  
University of Maryland School of Medicine, Institute of Human Virology  
University of Maryland School of Medicine, National Center for School Mental Health  
University of Maryland School of Music  
University of Maryland, Extension, Howard County  
University of Maryland, Extension, Howard County Master Gardeners  
University of Maryland, Extension, Howard County Master Naturalists  
University of Maryland, Extension, Howard County Watershed Stewards Academy  
University of Phoenix  
Unmatched Athlete  
Walden University  
Watson’s Tin Box of Ellicott City  
Western Governors University  
Western Howard County Soccer  
Western Howard County Youth Baseball/Softball League  
Whiteford, Taylor & Preston, Columbia  
Willow Springs Golf Course

# SCHOOL Partners

Educational partnerships are collaborative initiatives designed to achieve mutually agreed-upon goals and objectives to strengthen and enhance the quality of education in Howard County. The businesses and organizations listed below worked one-to-one with a selected school during the 2021–22 school year.

**ATHOLTON ES**  
A-OK Mentoring-Tutoring  
Clarks ACE Hardware  
Colonial Pipeline Company  
Giant Food, Freetown Road  
Grassroots Crisis Intervention Center  
Harris Teeter, Guilford Road  
Howard County Conservancy  
Howard County Library,  
East Columbia Branch  
Howard County Local Children's  
Board  
Howard County Office of  
Community Sustainability  
Howard County Police Department  
Roma's Breakfast & Pizzeria  
Scott Spedden – Farmers Insurance  
and Financial Services  
Silver Knights Enrichment  
The Kindness Pantry  
Touché Touchet Bakery, Columbia  
Towson University College of  
Education  
Trout Unlimited, Trout in the Classroom

**ATHOLTON HS**  
Alpha Phi Alpha Fraternity,  
Kappa Phi Lambda Chapter  
Ballet Mobile  
Columbia (MD) Alumnae Chapter,  
Delta Sigma Theta Sorority Inc.  
Grassroots Crisis Intervention Center  
Head Start, Old Cedar Lane  
Hickory Ridge Community  
Association  
Howard Community College  
Howard County Library,  
Central Branch  
Kiwanis Club of Ellicott City  
Prepare for Success, Community  
Action Council of Howard County  
Sunrise Senior Living of Columbia  
The Council of Elders of the Black  
Community of Howard County  
U.S. Army

**BELLOWS SPRING ES**  
Free Bikes 4 Kidz Maryland  
Howard County Library,  
Elkridge Branch  
Okinawan Karate Dojo  
Prepare for Success, Community  
Action Council of Howard County  
TasteWise Kids  
The Kindness Pantry  
Victory Martial Arts

**BOLLMAN BRIDGE ES**  
Continental Societies,  
Southeastern Howard/Laurel Chapter  
Free Bikes 4 Kidz Maryland  
Grace Community Church  
Howard Community College, Social  
Sciences/Teacher Education Division  
Howard County Library, Savage  
Branch & STEM Education Center

Howard County MultiService Center  
Kennedy Krieger Institute  
Mission19  
Sunny Smiles Summer Camp  
The Kindness Pantry

**BONNIE BRANCH MS**  
A-OK Mentoring-Tutoring  
Bridgeway Community Church  
First Evangelical Lutheran Church  
Green Valley Marketplace  
Howard County Library,  
Elkridge Branch  
Latinas on the Verge of Excellence  
Prepare for Success, Community  
Action Council of Howard County  
The Kindness Pantry

**BRYANT WOODS ES**  
A-OK Mentoring-Tutoring  
BJ's Wholesale Club  
Blessings in a Backpack  
Dreams & Visions Turned Reality  
Free Bikes 4 Kidz Maryland  
Howard County Food Bank,  
Community Action Council  
Howard County Library,  
Central Branch  
HowGirlsCode  
Kiwanis Club of Ellicott City  
Launch Trampoline Park  
Mission19  
Open Doors Food Pantry,  
Mt. Zion United Methodist Church  
Phi Beta Sigma Fraternity,  
Zeta Alpha Sigma Alumni Chapter  
Prepare for Success, Community  
Action Council of Howard County  
Rack Room Shoes  
Rotary Club of Columbia Town  
Center  
Smoothie King, Wilde Lake  
St. John United Church  
TasteWise Kids  
The Home Depot,  
Snowden River Parkway  
The Kindness Pantry

**BURLEIGH MANOR MS**  
A-OK Mentoring-Tutoring  
Bach to Rock Fulton  
Chesapeake Bay Foundation  
Equitable Advisors  
Horace Mann Educators Corporation  
Howard County Library, Miller Branch  
Jeff George Agency, Insurance and  
Financial Services  
Trout Unlimited, Trout in the Classroom  
Vocelli Pizza

**BUSHY PARK ES**  
Chez Tania  
Columbia Community Care,  
Equity4HC  
Glenelg United Methodist Church  
Glenwood Lions Club

Howard Community College  
Howard County Library,  
Glenwood Branch  
Junior Achievement of Central  
Maryland  
People Who Need People  
Smoothie King, McGaw Road  
Tony Locos

**CEDAR LANE SCHOOL**  
ATG Rehab  
Athelas Institute  
Athletes Serving Athletes  
Bach to Rock Fulton  
Baltimore-Washington Conference  
of The United Methodist Church  
Beijing Dongcheng District  
Community Options  
D&S Karate Studios  
Encore Stables  
Fidos for Freedom  
Grace Community Church  
Grassroots Day Resource Center  
Grotto Pizza  
Hearn Kirkwood  
Howard County Autism Society  
Humanim  
ISEC  
Ledo Pizza, Daybreak Circle  
Lib's Grill  
Maple Lawn Commercial Association  
Maple Lawn Homeowners  
Association  
McDonald's, Maple Lawn  
Mission19  
Prepare for Success, Community  
Action Council of Howard County  
Special Olympics Howard County  
Studio Dans  
The Pearl Modern Spa and Boutique  
Town Center Community Association

**CENTENNIAL HS**  
AllCare of Maryland  
Alpha Phi Alpha Fraternity,  
Kappa Phi Lambda Chapter  
Columbia (MD) Alumnae Chapter,  
Delta Sigma Theta Sorority Inc.  
Giant Food, Baltimore National Pike  
Grassroots Crisis Intervention Center  
Hickory Ridge Community  
Association  
Howard Community College  
Howard County Library, Miller Branch  
Howard Community College  
Jeff George Agency,  
Insurance and Financial Services  
Kiwanis Club of Ellicott City  
Maryland Chinese Language  
Institute  
Sport Clips Haircuts of Turf Valley  
Sunrise Senior Living of Columbia  
The Arc of Howard County  
Turf Valley Resort  
Under Armour

**CENTENNIAL LANE ES**  
Howard County Library, Miller Branch

**CLARKSVILLE ES**  
Chick-fil-A, Clarksville  
Cold Stone Creamery, Clarksville Pike  
Giant Food, Daybreak Circle  
Howard County Department of  
Public Works  
Howard County Library,  
Central Branch  
Kendall Hardware  
Ledo Pizza, Daybreak Circle  
McDonald's, Daybreak Circle  
Prepare for Success, Community  
Action Council of Howard County  
Starbucks, Clarksville  
The Walrus Oyster & Ale House  
Tino's Italian Bistro & Wine Bar  
Trout Unlimited, Trout in the Classroom  
Washington Suburban Sanitary  
Commission, Green School Program

**CLARKSVILLE MS**  
Alpha Phi Alpha Fraternity,  
Kappa Phi Lambda Chapter  
Bowen's Bus Service  
Chick-fil-A, Clarksville  
HowGirlsCode  
Howard Community College,  
Department of Public Safety  
Howard County Library,  
Central Branch  
Johns Hopkins University Applied  
Physics Laboratory  
Northrop Grumman Corporation  
Omega Psi Phi Fraternity,  
Tau Pi Chapter  
The Council of Elders of the Black  
Community of Howard County

**CLEMENS CROSSING ES**  
Blessings in a Backpack  
Bonnie Plants  
Chick-fil-A, Johns Hopkins Road  
First National Bank, Columbia Branch  
Grassroots Crisis Intervention Center  
Hickory Ridge Community  
Association  
Howard Community College  
Howard County Library,  
Central Branch  
Nothing Bundt Cakes  
Patient First  
Prepare for Success, Community  
Action Council of Howard County  
Smoothie King, Wilde Lake  
TasteWise Kids  
The Wendy Slaughter Team at  
Elevate Real Estate Brokerage  
Towson University

**CRADLEROCK ES**  
African American Community  
Roundtable  
Alpha Kappa Alpha Sorority,  
Iota Lambda Omega Chapter  
Alpha Phi Alpha Fraternity,  
Kappa Phi Lambda Chapter

Atholton Seventh-day Adventist  
Church  
Celebration Church  
Continental Societies,  
Columbia, Maryland Chapter  
Ellicott City Soccer Club  
Foundation PlusOne  
Free Bikes 4 Kidz Maryland  
Glenelg United Methodist Church  
Howard County Library,  
East Columbia Branch  
Howard County Local Children's  
Board

**DUCKETTS LANE ES**  
Alpha Kappa Alpha Sorority,  
Iota Lambda Omega Chapter  
Blessings in a Backpack  
Chick-fil-A, Arundel Mills Circle  
CrossLife Community Church  
Free Bikes 4 Kidz Maryland  
Grace Community Church  
Green Valley Marketplace  
Howard County Library,  
Elkridge Branch  
Laurel Church of Christ  
Mission19  
MOMS Club of Elkridge  
New Hope Adventist Church  
Okinawan Karate Dojo  
Operation Warm  
TasteWise Kids  
The Catholic Community of  
Ascension and St. Augustine  
The Kindness Pantry

**DAYTON OAKS ES**  
Howard County Autism Society  
Howard County Library,  
Glenwood Branch  
Oriole Advocates  
Outback Steakhouse, Long Gate  
Oyster Recovery Partnership  
Prepare for Success, Community  
Action Council of Howard County  
Sport Clips Haircuts of Turf Valley  
Sustainable Resource Management  
University of Maryland Center for  
Environmental Science  
Uno Pizzeria & Grill

**DEEP RUN ES**  
A-OK Mentoring-Tutoring  
Community Action Council of  
Howard County  
Defense Information System  
Agency Fort George G. Meade  
Ellicott City Soccer Club  
Frank's Produce and Greenhouse  
Free Bikes 4 Kidz Maryland  
Grace Community Church  
Grassroots Crisis Intervention Center  
Howard County Department of Fire  
and Rescue Services  
Howard County Health Department  
Howard County Library,  
Elkridge Branch  
Howard County Local Children's  
Board  
Howard County MultiService Center  
Howard County Office of Children  
and Families  
Howard County Police Department  
JustLiving Advocacy  
MakingChange  
Mike's Music  
On the Border  
Our Lady of Perpetual Help  
Paragon at Columbia Overlook  
Prepare for Success, Community  
Action Council of Howard County  
Skinsational Scents  
The Catholic Community of  
Ascension and St. Augustine

**ELKRIDGE ES**  
CrossLife Community Church  
Elkridge Baptist Church  
God's Trucking Ministry  
Green Valley Marketplace  
Howard County Department of  
Public Works  
Howard County Library,  
Elkridge Branch  
Prepare for Success, Community  
Action Council of Howard County  
The Kindness Pantry

The Hill  
The Kindness Pantry  
Trader Joe's  
Trinity Episcopal Church  
Victory Martial Arts  
Wesley Chapel United Methodist  
Church  
WKD Karate 4 Girls

**ELKRICHT LANE ES**  
Alpha Kappa Alpha Sorority,  
Iota Lambda Omega Chapter  
Blessings in a Backpack  
Chick-fil-A, Arundel Mills Circle  
CrossLife Community Church  
Free Bikes 4 Kidz Maryland  
Grace Community Church  
Green Valley Marketplace  
Howard County Library,  
Elkridge Branch  
Laurel Church of Christ  
Mission19  
MOMS Club of Elkridge  
New Hope Adventist Church  
Okinawan Karate Dojo  
Operation Warm  
TasteWise Kids  
The Catholic Community of  
Ascension and St. Augustine  
The Kindness Pantry

**DUNLOGGIN MS**  
Chesapeake Bay Foundation  
ClearShark H2O  
Coastal Conservation Association  
Maryland  
First Evangelical Lutheran Church  
Howard County Library, Miller Branch  
Kentmorr Marina  
Oriole Advocates  
Outback Steakhouse, Long Gate  
Oyster Recovery Partnership  
Prepare for Success, Community  
Action Council of Howard County  
Sport Clips Haircuts of Turf Valley  
Sustainable Resource Management  
University of Maryland Center for  
Environmental Science  
Uno Pizzeria & Grill

**ELKRIDGE ES**  
CrossLife Community Church  
Elkridge Baptist Church  
God's Trucking Ministry  
Green Valley Marketplace  
Howard County Department of  
Public Works  
Howard County Library,  
Elkridge Branch  
Prepare for Success, Community  
Action Council of Howard County  
The Kindness Pantry

**ELKRIDGE LANDING MS**  
Cindy's Soft Serve  
Coal Fire Pizza  
Daniels Restaurant & Open Air Bar  
Dunkin', Washington Boulevard  
Elkridge Food Pantry  
Ellicott City Rotary Club  
Grassroots Crisis Intervention Center  
Green Valley Marketplace  
Howard County Library,  
Elkridge Branch  
Ledo Pizza, Troy Hill Drive  
Penniman Park Apartments

Prepare for Success, Community  
Action Council of Howard County  
The Kindness Pantry  
Weis Markets, Waterloo Road

**ELLICOTT MILLS MS**  
Howard County Library, Miller Branch

**FOLLY QUARTER MS**  
Barnes and Noble,  
Long Gate Shopping Center  
Glenwood Lions Club  
Grassroots Crisis Intervention Center  
Howard County Library,  
Glenwood Branch  
Red Bird Bar & Grille

**FOREST RIDGE ES**  
A-OK Mentoring-Tutoring  
Celebration Church  
Chick-fil-A, Johns Hopkins Road  
Coastal Conservation Association  
Maryland  
Foundation PlusOne  
Free Bikes 4 Kidz Maryland  
Howard County Library, Savage  
Branch & STEM Education Center  
Howard County MultiService Center  
Mathnasium of Laurel  
Mission19  
Mother Nature's  
Prepare for Success, Community  
Action Council of Howard County  
Sunny Smiles Summer Camp  
The Kindness Pantry

**FULTON ES**  
Arbor Terrace  
Free Bikes 4 Kidz Maryland  
Howard County Library, Central Branch  
Lib's Grill  
Maple Lawn Commercial  
Association  
Okinawan Karate Dojo  
Southern Management Corporation,  
The Residences at Oella Mill  
The Kindness Pantry  
The Nora Project

**GLENELG HS**  
Alpha Phi Alpha Fraternity,  
Kappa Phi Lambda Chapter  
Columbia (MD) Alumnae Chapter,  
Delta Sigma Theta Sorority Inc.  
Columbia Center for Theatrical Arts  
E.W. Beck's  
Eyre Bus, Tour & Travel  
Glenwood Lions Club  
Grassroots Crisis Intervention Center  
Horizon Foundation  
Howard County Library,  
Glenwood Branch  
Identity Promotions  
Kiwanis Club of Ellicott City  
NASA Goddard Space Flight Center  
Red Bird Bar & Grille  
The Council of Elders of the Black  
Community of Howard County  
Turf Valley Resort

**GLENWOOD MS**  
Glenwood Lions Club  
Grassroots Crisis Intervention Center  
Howard County Library,  
Glenwood Branch  
The Kindness Pantry

**GORMAN CROSSING ES**  
Chick-fil-A, Johns Hopkins Road  
Gailes' Violin Shop  
Howard County Library, Savage  
Branch & STEM Education Center  
Howard County MultiService Center  
National Security Agency  
Prepare for Success, Community  
Action Council of Howard County  
TasteWise Kids  
The Kindness Pantry

**GUILFORD ES**  
A-OK Mentoring-Tutoring  
Alpha Kappa Alpha Sorority,  
Iota Lambda Omega Chapter  
Always Reading  
Asbury United Methodist Church –  
Jessup  
Columbia (MD) Alumnae Chapter,  
Delta Sigma Theta Sorority Inc.  
Columbia Community Care,  
Equity4HC  
First Baptist Church of Guilford  
Free Bikes 4 Kidz Maryland  
Glen Mar United Methodist Church  
Grace Community Church  
Howard Community College,  
Center for Service Learning  
Howard County Center of African  
American Culture  
Howard County Food Bank,  
Community Action Council  
Howard County Library,  
East Columbia Branch  
Howard County MultiService Center  
Howard County Office of  
Community Sustainability  
Laurel Church of Christ  
Mission19  
National Center for Children and  
Families  
Neighbor Ride  
New Hope Adventist Church  
Numa Management Associates  
Omega Psi Phi Fraternity,  
Tau Pi Chapter  
Prepare for Success, Community  
Action Council of Howard County  
Saint James United Methodist  
Church  
TasteWise Kids  
The Kindness Pantry  
Union Church

**HAMMOND ES**  
Howard County Library, Savage  
Branch & STEM Education Center  
Prepare for Success, Community  
Action Council of Howard County  
Trout Unlimited, Trout in the Classroom

**HAMMOND HS**  
Alpha Phi Alpha Fraternity,  
Kappa Phi Lambda Chapter  
Apombee  
Bridgeway Community Church  
BSN SPORTS  
Celebration Church  
Chick-fil-A, Johns Hopkins Road  
Columbia (MD) Alumnae Chapter,  
Delta Sigma Theta Sorority Inc.  
Columbia Community Center of  
Seventh-day Adventists  
First Baptist Church of Guilford  
Grassroots Crisis Intervention  
Center

# SCHOOL Partners continued

## HAMMOND HS, continued

Howard County Library, Savage Branch & STEM Education Center Mission19  
Prepare for Success, Community Action Council of Howard County  
Subway, Minstrel Way  
Under Armour

## HAMMOND MS

A-OK Mentoring-Tutoring  
Boys to Men Mentoring Network of Greater Washington  
Chesapeake Bay Foundation  
Chick-fil-A, Johns Hopkins Road  
Howard Community College, Center for Service Learning  
Howard County Library, Savage Branch & STEM Education Center  
Prepare for Success, Community Action Council of Howard County  
Robinson Nature Center, Howard County Recreation and Parks

## HANOVER HILLS ES

Alpha Kappa Alpha Sorority, Iota Lambda Omega Chapter  
Dartmoor Place, A MURN Managed Community  
First Baptist Church of Elkridge  
Howard County Library, Elkridge Branch  
Mission19  
Okinawan Karate Dojo  
Prepare for Success, Community Action Council of Howard County  
Staples, Hanover  
TasteWise Kids  
The Kindness Pantry

## HARPER'S CHOICE MS

Blessings in a Backpack  
Harper's Choice Community Association  
Howard County Library, Central Branch  
Howard County Office on Aging and Independence, Florence Bain Senior Center  
Howard County Police Department, Harper's Choice Village Center  
LindaBen Foundation Inc.  
McDonald's, Harpers Farm Road  
No Kid Hungry, Share Our Strength  
Prepare for Success, Community Action Council of Howard County  
Safeway, Harpers Farm Road  
Salazar Catering Services/ Boardroom Café  
The Kindness Pantry  
Winter Growth, Ruth Keeton House

## HOLLIFIELD STATION ES

Applebee's  
Howard County Food Bank, Community Action Council  
Howard County Library, Miller Branch  
Ledo Pizza, Baltimore National Pike  
Prepare for Success, Community Action Council of Howard County  
Qdoba Mexican Eats  
The Kindness Pantry  
Towson University

## HOMEWOOD CENTER

Abrakadoodle-Howard County  
Boy Scouts of America, Baltimore Area Council  
Bridgeway Community Church  
Chick-fil-A, Clarksville  
City on a Hill Community Church  
Echo Marketing, We Are One  
Elite Boxing & Fitness Gym  
Families First Counseling & Psychiatry  
Giant Food, Daybreak Circle  
Grace Community Church  
Harris Teeter, Resort Road  
Howard County Conservancy  
Howard County Health Department  
Howard County Library System  
Howard County Local Children's Board  
Howard County Office of Community Sustainability  
Humanim  
Kids in Need Foundation  
Leadership Howard County  
Living Wellness Chiropractic of Columbia  
Mission19  
National Center for Children and Families  
Open Doors Food Pantry, Mt. Zion United Methodist Church  
Pets on Wheels  
Prepare for Success, Community Action Council of Howard County  
PTA Council of Howard County  
Robinson Nature Center, Howard County Recreation and Parks  
Ronald McDonald House Charities of Baltimore  
Rotary Club of Columbia-Patuxent  
Salazar Catering Services/ Boardroom Café  
Springboard Community Services  
The Joy of Living Women and Children's Center  
The Kindness Pantry  
Y in Central Maryland, Dancel Family Center

## HOWARD HS

Alpha Phi Alpha Fraternity, Kappa Phi Lambda Chapter  
Columbia (MD) Alumnae Chapter, Delta Sigma Theta Sorority Inc.  
Columbia Community Care, Equity4HC  
Giant Food, Centre Park Drive  
Grassroots Crisis Intervention Center  
Green Valley Marketplace  
Horizon Foundation  
Howard County Library, Elkridge Branch  
Living Wellness Chiropractic of Columbia  
Prepare for Success, Community Action Council of Howard County  
The Council of Elders of the Black Community of Howard County  
Tino's Italian Bistro & Wine Bar  
U.S. Army

## ILCHESTER ES

Green Valley Marketplace  
Howard County Library, Elkridge Branch  
Outback Steakhouse, Long Gate

## JEFFERS HILL ES

A-OK Mentoring-Tutoring  
Blessings in a Backpack  
Camp Attaway  
Howard County Library, East Columbia Branch  
Nothing Bundt Cakes  
Omega Psi Phi Fraternity, Tau Pi Chapter  
PNC Bank, Elkridge Branch  
Prepare for Success, Community Action Council of Howard County  
St John Baptist Church  
TasteWise Kids  
The Kindness Pantry  
The Links, Incorporated, Columbia, Maryland Chapter  
Towson University College of Education  
Vanguard Orthodontics

## JUDY CENTER IN HOWARD COUNTY

Barnes & Noble, The Mall in Columbia  
Christ United Methodist Church  
Columbia Area Mothers of Multiples  
Cradlerock Children's Center  
East Columbia Preschool  
Eco-Tots Early Learning Center  
Foundation PlusOne  
Glen Mar United Methodist Church  
Head Start, Dasher Green Center  
Howard Community College  
Howard County Department of Social Services  
Howard County Health Department  
Howard County Health Department, Local Behavioral Health Authority Board  
Howard County Library System  
Howard County MultiService Center  
Howard County Office of Children and Families  
Howard County Office of Children and Families, Child Care Resource Center  
Howard County Recreation and Parks  
JustLiving Advocacy  
Linden-Linthicum United Methodist Church  
Lisbon United Methodist Church  
Luminus Network for New Americans  
Owen Brown Community Association  
Trumpet in Zion Church of God in Christ  
United Way of Central Maryland  
University of Maryland, Extension, Howard County

## LAKE ELKHORN MS

A-OK Mentoring-Tutoring  
African American Community Roundtable  
Alpha Kappa Alpha Sorority, Iota Lambda Omega Chapter

Alpha Phi Alpha Fraternity, Kappa Phi Lambda Chapter  
BlueVoyant  
Building Families for Children  
Christ Episcopal Church, Columbia  
Columbia Community Care, Equity4HC  
Continental Societies, Columbia, Maryland Chapter  
Emmanuel-Brinklow Seventh-day Adventist Church  
Families For Education Improvement  
Foundation PlusOne  
Glenelg United Methodist Church  
Grace Community Church  
HCAR Cares  
Howard Community College, Center for Service Learning  
Howard County Library, East Columbia Branch  
Howard County MultiService Center  
Jack and Jill of America Columbia, Maryland Chapter  
Kiwanis Club of Ellicott City  
Mediation & Conflict Resolution Center  
Owen Brown Community Association  
Pearl Foundation  
People Who Need People  
Phi Beta Sigma Fraternity, Zeta Alpha Sigma Alumni Chapter  
SECU, Columbia  
Smoothie King, McGaw Road  
St John Baptist Church  
The Joy of Living Women and Children's Center  
The Kindness Pantry  
The Links, Incorporated, Columbia, Maryland Chapter  
The Society, Incorporated, Howard County Chapter  
Union Church  
Unitarian Universalist Congregation of Columbia  
Valley Brook Community Church  
Zeta Phi Beta Sorority, Lambda Gamma Zeta Chapter

## LAUREL WOODS ES

Blessings in a Backpack  
Crossroads Church of the Nazarene  
Free Bikes 4 Kidz Maryland  
Grace Community Church  
Howard County Library, Savage Branch & STEM Education Center  
Howard County MultiService Center  
LindaBen Foundation Inc.  
The Kindness Pantry  
The Thrifty Teacher  
UMBC Education Department

## LIME KILN MS

Grassroots Crisis Intervention Center  
Howard County Library, Central Branch  
Maple Lawn Commercial Association  
The Kindness Pantry

## LISBON ES

A-OK Mentoring-Tutoring  
Howard County Library System  
Howard County Library, Glenwood Branch

Howard County Local Children's Board  
Howard County Office of Community Sustainability  
Lisbon United Methodist Church  
Sandy Spring Bank, Lisbon Branch  
The Grill At Lisbon

## LONG REACH HS

Alpha Phi Alpha Fraternity, Kappa Phi Lambda Chapter  
Celebration Church  
Columbia (MD) Alumnae Chapter, Delta Sigma Theta Sorority Inc.  
Horizon Foundation  
Howard County Education Federal Credit Union  
Howard County Library, Elkridge Branch  
Prepare for Success, Community Action Council of Howard County  
The Council of Elders of the Black Community of Howard County  
The Kindness Pantry  
UMBC College of Engineering and Information Technology

## LONGFELLOW ES

A-OK Mentoring-Tutoring  
Always Reading  
Blessings in a Backpack  
Columbia Association  
Equitable Advisors  
Free Bikes 4 Kidz Maryland  
Horace Mann Educators Corporation  
Howard Community College, Academic/Student Support and Career Services  
Howard County Food Bank, Community Action Council  
Howard County Library, Central Branch  
LindaBen Foundation Inc.  
Mission19  
Okinawan Karate Dojo  
Perfect Generation Ministries  
Prepare for Success, Community Action Council of Howard County  
Smoothie King, Wilde Lake  
The Children's Gift Foundation  
The Kindness Pantry  
Towson University College of Education  
Winter Growth, Ruth Keeton House

## MANOR WOODS ES

A-OK Mentoring-Tutoring  
Free Bikes 4 Kidz Maryland  
Howard County Library, Miller Branch  
Junior Achievement of Central Maryland  
Trout Unlimited, Trout in the Classroom

## MARRIOTTS RIDGE HS

Alpha Phi Alpha Fraternity, Kappa Phi Lambda Chapter  
Anthony Corrao Team of Long & Foster Real Estate, Christie's International Real Estate  
Columbia (MD) Alumnae Chapter, Delta Sigma Theta Sorority Inc.  
Glenwood Lions Club  
Howard County Library, Glenwood Branch  
Kiwanis Club of Ellicott City  
Mission19

Sport Clips Haircuts of Turf Valley  
The Council of Elders of the Black Community of Howard County  
West Friendship Volunteer Fire Department

## MAYFIELD WOODS MS

A-OK Mentoring-Tutoring  
Alpha Phi Alpha Fraternity, Kappa Phi Lambda Chapter  
Continental Societies, Southeastern Howard/Laurel Chapter  
Giant Food, Marshalee Drive  
Glenelg United Methodist Church  
Grassroots Crisis Intervention Center  
Howard County Library, Elkridge Branch  
Howard County Office of Community Sustainability  
Howard County Recreation and Parks  
Junior Achievement of Central Maryland  
Kiwanis Club of Ellicott City  
Omega Eta Omega Chapter, Alpha Kappa Alpha Sorority  
Prepare for Success, Community Action Council of Howard County  
Restorative Justice Partnership  
Smoothie King, McGaw Road  
St. Stephens AME Church  
State Library Resource Center, Enoch Pratt Free Library  
Towson University, Albert S. Cook Library

## MOUNT VIEW MS

Annapolis Maritime Museum & Park  
Head Start, Ellicott City Center  
Howard County Conservancy  
Howard County Library, Glenwood Branch  
Oyster Recovery Partnership  
Sport Clips Haircuts of Turf Valley  
Turf Valley Resort

## MT. HEBRON HS

Alpha Phi Alpha Fraternity, Kappa Phi Lambda Chapter  
Church of the Resurrection  
Columbia (MD) Alumnae Chapter, Delta Sigma Theta Sorority Inc.  
Community Action Council of Howard County  
Ellicott City Rotary Club  
Grace Community Church  
Grassroots Crisis Intervention Center  
Horizon Foundation  
Howard County Conservancy  
Howard County Library, Miller Branch  
Kiwanis Club of Ellicott City  
Luna's Day Spa  
Mission19  
Prepare for Success, Community Action Council of Howard County  
Salazar Catering Services/ Boardroom Café  
Sidney Kimmel Comprehensive Cancer Center at Johns Hopkins  
Under Armour  
Y in Central Maryland, Dancel Family Center

## MURRAY HILL MS

Chick-fil-A, Johns Hopkins Road  
Continental Societies, Southeastern Howard/Laurel Chapter  
Five Below

Grassroots Crisis Intervention Center  
Howard County Library, Savage Branch & STEM Education Center  
Howard County MultiService Center  
Prepare for Success, Community Action Council of Howard County

## NORTHFIELD ES

A-OK Mentoring-Tutoring  
Clarks ACE Hardware  
Dirt Rooster Bicycles  
FISH of Howard County  
Free Bikes 4 Kidz Maryland  
Grassroots Crisis Intervention Center  
Healthy Little Cooks  
Howard County Library, Miller Branch  
Howard County Youth Program  
Lutheran Village at Miller's Grant  
Okinawan Karate Dojo  
Sport Clips Haircuts of Turf Valley

## OAKLAND MILLS HS

Alpha Phi Alpha Fraternity, Kappa Phi Lambda Chapter  
Building Families for Children  
Christ Episcopal Church, Columbia  
Columbia (MD) Alumnae Chapter, Delta Sigma Theta Sorority Inc.  
Columbia Community Care, Equity4HC  
Columbia Youth and Teen Center @ The Barn  
EventEQ  
Free Bikes 4 Kidz Maryland  
Howard County Food Bank, Community Action Council  
Howard County Library, East Columbia Branch  
Oakland Mills Online  
Prepare for Success, Community Action Council of Howard County  
Smoothie King, McGaw Road  
Subway, Centre Park Drive  
Sylvan Learning Center  
The Council of Elders of the Black Community of Howard County  
U.S. Air Force

## OAKLAND MILLS MS

Building Families for Children  
Columbia Community Care, Equity4HC  
Columbia Youth and Teen Center @ The Barn  
Free Bikes 4 Kidz Maryland  
Giant Food – Distribution Operations  
Howard County Library, East Columbia Branch  
Howard County MultiService Center  
Mission19  
Oakland Mills Community Association  
Prepare for Success, Community Action Council of Howard County  
Safeway, Baltimore National Pike  
Smoothie King, McGaw Road

## PATAPSCO MS

Bethany Korean United Methodist Church  
Chesapeake Shakespeare Company  
Crossroads Church of the Nazarene  
Grassroots Crisis Intervention Center  
Horizon Foundation  
Howard County Library, Miller Branch

Junior Achievement of Central Maryland  
Prepare for Success, Community Action Council of Howard County  
UMBC Education Department  
Vocelli Pizza

## PATUXENT VALLEY MS

Apombee  
Atmosphere  
Columbia Community Care, Equity4HC  
Continental Societies, Southeastern Howard/Laurel Chapter  
Full Gospel Baptist Church  
Giant Food – Distribution Operations  
Grassroots Day Resource Center  
Harris Teeter, Resort Road  
Hayes Educational Resources Enterprises (H.E.R.E.)  
HDR  
Herr Foods  
HopeWorks  
Howard County Conservancy  
Howard County Food Bank, Community Action Council  
Howard County Library, Savage Branch & STEM Education Center  
Laurel Cats  
Leaders of Tomorrow Youth Center  
National Security Agency  
Prepare for Success, Community Action Council of Howard County  
Reginald F. Lewis Museum of Maryland African American History & Culture  
Sunday Suppers  
The Kindness Pantry  
Wegmans  
Weis Markets, Birmingham Way

## PEHELPS LUCK ES

A-OK Mentoring-Tutoring  
Crosswalk Lutheran Church  
Dunkin', Centre Park Drive  
Free Bikes 4 Kidz Maryland  
Howard County Food Bank, Community Action Council  
Howard County Library, East Columbia Branch  
Okinawan Karate Dojo  
Prepare for Success, Community Action Council of Howard County  
Ready At Five  
Subway, Centre Park Drive  
The Kindness Pantry

## POINTERS RUN ES

Anthony Corrao Team of Long & Foster Real Estate, Christie's International Real Estate  
Chick-fil-A, Clarksville  
Harris Teeter  
Howard County Department of Public Works  
Howard County Library, Central Branch  
Jason's Deli  
Pointers Pilates  
Sandy Spring Bank, Clarksville Branch

## RESERVOIR HS

Alpha Phi Alpha Fraternity, Kappa Phi Lambda Chapter  
American Pest  
Arbor Terrace  
Biggs & Featherbelle

# SCHOOL Partners continued

## RESERVOIR HS, continued

Carbiz  
Chick-fil-A, Johns Hopkins Road  
Columbia (MD) Alumnae Chapter,  
Delta Sigma Theta Sorority Inc.  
Columbia Center for Theatrical Arts  
Conexiones  
Coreworks Fitness Studio,  
Maple Lawn  
Greenebaum Enterprises  
HiLites Hair Salon  
Howard County Council  
Howard County Library, Savage  
Branch & STEM Education Center  
Howard County MultiService Center  
Howard County Office on Aging  
and Independence,  
North Laurel 50+ Center  
Johns Hopkins University Applied  
Physics Laboratory  
Lib's Grill  
Luminus Network for New  
Americans  
MakingChange  
Maple Lawn Commercial Association  
Maryland University of Integrative  
Health  
NASA Goddard Space Flight Center  
Outer Office  
Prepare for Success, Community  
Action Council of Howard County  
Putting on the Ritz  
St. John Properties, Maple Lawn  
Sunrise Senior Living of Columbia  
The Kindness Pantry  
University of Maryland College of  
Computer, Mathematical, &  
Natural Sciences  
Zenyon

## RIVER HILL HS

Alpha Phi Alpha Fraternity,  
Kappa Phi Lambda Chapter  
Anthony Corrao Team of Long  
& Foster Real Estate,  
Christie's International Real Estate  
Chick-fil-A, Clarksville  
Columbia (MD) Alumnae Chapter,  
Delta Sigma Theta Sorority Inc.  
Credit Union Foundation of  
Maryland and the District of  
Columbia  
Howard County Department of  
Public Works  
Howard County Education Federal  
Credit Union  
Howard County Library,  
Central Branch  
Kiwanis Club of Ellicott City  
McDonald's, Daybreak Circle

## ROCKBURN ES

Columbia Center for Theatrical Arts  
Eggspectation  
Green Valley Marketplace  
Howard County Department of  
Public Works  
Howard County Library,  
Elkridge Branch  
Howard County Recreation and Parks  
Howard County Recreation and  
Parks, Rockburn Park

McDonald's, Snowden River Parkway  
National Security Agency  
Tino's Italian Bistro & Wine Bar  
Victory Martial Arts

## RUNNING BROOK ES

A-OK Mentoring-Tutoring  
Alpha Kappa Alpha Sorority,  
Iota Lambda Omega Chapter  
Always Reading  
Avalon Apartments at Fairway Hills  
Bethany United Methodist Church  
Blessings in a Backpack  
Bridgeway Community Church  
Columbia Presbyterian Church  
Columbia Youth and Teen Center @  
The Barn  
Dorsey's Search Community  
Association  
DreamBuilders,  
St. Mark's Episcopal Church  
Free Bikes 4 Kidz Maryland  
Hickory Ridge Community  
Association  
Howard Community College  
Howard County Library,  
Central Branch  
Howard County Police Department  
Kittamaqundi Community Church  
Long & Foster Ellicott City  
Mission19  
Open Doors Food Pantry, Mt. Zion  
United Methodist Church  
Our Lady of Perpetual Help  
Prepare for Success, Community  
Action Council of Howard County  
Residences at Vantage Point  
Rotary Club of Columbia Town  
Center  
Sleep in Heavenly Peace,  
Howard County Chapter  
St John Baptist Church  
TasteWise Kids  
The Brook at Columbia Apartments  
The Columbia Bank,  
Columbia Town Center  
The Howard Hughes Corporation  
The Kindness Pantry  
Town Center Community  
Association  
Wilde Lake Community Association

## ST. JOHN'S LANE ES

China Taste  
Glory Days Grill  
Grassroots Crisis Intervention Center  
Howard County Library, Miller Branch

## STEVENS FOREST ES

A-OK Mentoring-Tutoring  
Bicycling Advocates of Howard  
County  
Building Families for Children  
Free Bikes 4 Kidz Maryland  
Howard Community College,  
Center for Service Learning  
Howard County Library,  
East Columbia Branch  
Howard County Local Children's  
Board  
HowGirlsCode

Jewish Federation of Howard County  
Phi Beta Sigma Fraternity,  
Zeta Alpha Sigma Alumni Chapter  
Prepare for Success, Community  
Action Council of Howard County  
The Birthday Books Project  
The Kindness Pantry  
The Savoy Team of Keller Williams  
Integrity

## SWANSFIELD ES

A-OK Mentoring-Tutoring  
Blessings in a Backpack  
Columbia Community Care,  
Equity4HC  
Ellicott City Soccer Club  
Free Bikes 4 Kidz Maryland  
Grace Community Church  
Hope Assembly of God  
Howard Community College,  
Center for Service Learning  
Howard County Library,  
Central Branch  
Howard County Local Children's  
Board  
Mission19  
Patient First  
TasteWise Kids  
The Kindness Pantry  
Trout Unlimited, Trout in the Classroom  
University of Maryland,  
Extension, Howard County

## TALBOTT SPRINGS ES

Blessings in a Backpack  
Building Families for Children  
Ellicott City Soccer Club  
Free Bikes 4 Kidz Maryland  
Howard County Library,  
East Columbia Branch  
Howard County Local Children's  
Board  
Howard County Office of  
Community Sustainability  
Mediation & Conflict Resolution  
Center  
Oakland Mills Community  
Association  
Prepare for Success, Community  
Action Council of Howard County  
St John Baptist Church  
TasteWise Kids  
The Kindness Pantry  
The Savoy Team of Keller Williams  
Integrity  
Unitarian Universalist Congregation  
of Columbia

## THOMAS VIADUCT MS

Boys to Men Mentoring Network of  
Greater Washington  
Chick-fil-A, Arundel Mills Circle  
First Baptist Church of Elkridge  
Green Valley Marketplace  
Howard County Food Bank,  
Community Action Council  
Howard County Library,  
Elkridge Branch  
Howard County NAACP Youth  
Council

Josephine B. Scheffenacker  
Education Trust  
Prepare for Success, Community  
Action Council of Howard County

## THUNDER HILL ES

Free Bikes 4 Kidz Maryland  
Howard County Library,  
East Columbia Branch  
Howard County Sheriff's Office  
Oakland Mills Community  
Association  
Okinawan Karate Dojo  
Prepare for Success, Community  
Action Council of Howard County  
Smoothie King, McGaw Road  
TasteWise Kids

## TRIADELPHIA RIDGE ES

A-OK Mentoring-Tutoring  
Bach to Rock Fulton  
Brunswick Zone Normandy  
Free Bikes 4 Kidz Maryland  
Glenelg United Methodist Church  
Howard Community College,  
Center for Service Learning  
Howard County Library,  
Glenwood Branch  
Red Bird Bar & Grille  
River Hill Grill  
TasteWise Kids

## VETERANS ES

Bethel Baptist Church  
Brunswick Zone Normandy  
First Evangelical Lutheran Church  
Howard County Library, Miller Branch  
Mission19  
Okinawan Karate Dojo  
Omega Eta Omega Chapter,  
Alpha Kappa Alpha Sorority  
Prepare for Success, Community  
Action Council of Howard County  
St. Peter's Episcopal Church  
Veterans of Foreign Wars Auxiliary,  
Yingling-Ridgely Post 7472  
Veterans of Foreign Wars of the  
United States,  
Yingling-Ridgely Post 7472  
Y in Central Maryland,  
Dancel Family Center

## WATERLOO ES

Eggspectation  
Giant Food – Distribution Operations  
Howard County Library, Miller Branch  
Howard County Police Department  
Prepare for Success, Community  
Action Council of Howard County  
St. John Lutheran Church  
The First Tee of Howard County  
The Kindness Pantry  
Toys for Tots, Howard County

## WAVERLY ES

Howard County Library, Miller Branch  
Mission19  
Towson University  
We Promote Health

Continued on next page →

# GIFTED AND TALENTED Program

The Gifted and Talented Program provides accelerated and enriched learning opportunities for students showing exceptional ability or interest in advanced-level studies. Gifted and Talented resource teachers at the elementary and middle school level enhance the standard curriculum and provide specialized services to develop students' unique talents and aptitudes. At the high school level, intern/mentor opportunities provide a formal, site-based, academic relationship between a high school student and a professional. In this structured relationship, mentors guide students in the pursuit of knowledge and scholarly research. Program partners for the 2021–22 school year included:

Advanced Fluidics  
Amos & Muffoletto  
Arabesque Dance Studio  
Arium AE  
ARM Group Inc.  
Arthritis Care Specialists of  
Maryland  
Athelas Institute  
Baby and Me Lactation Services  
Bethany Centennial Animal Hospital  
Blue Wave Semiconductors  
Business & Technology Law Group  
Cat & Dog Hospital of Columbia  
Chesapeake Oncology Hematology  
Associates  
Columbia Art Center  
Columbia Association  
Columbia Horse Center  
Community Foundation of Howard  
County  
Countryside Veterinary Clinic  
Damon Foreman Music Academy  
Dentistry for Children  
Doug Kapustin Photography  
EFW  
Elkridge Animal Hospital  
Fit For Life Training  
G3 Technologies  
Garbis Dental Associates  
Grace Community Church  
Greenbelt Rehab  
Greene Law Firm  
Hickory Ridge Animal Hospital  
HoCoPolitSo (Howard County  
Poetry and Literature Society)  
Hope Counseling Center  
HopeWorks

## WEST FRIENDSHIP ES

Howard County Library,  
Glenwood Branch  
Trout Unlimited, Trout in the Classroom  
West Friendship Volunteer Fire  
Department

## WILDE LAKE HS

Alpha Phi Alpha Fraternity,  
Kappa Phi Lambda Chapter  
Columbia (MD) Alumnae Chapter,  
Delta Sigma Theta Sorority Inc.  
Columbia Community Care,  
Equity4HC  
Free Bikes 4 Kidz Maryland  
Howard Community College  
Howard County Library,  
Central Branch  
Luminus Network for New  
Americans  
McDonald's, Harpers Farm Road  
NAACP, Howard County Branch

Howard Community College,  
Science and Technology Division  
Howard County Circuit Court  
Howard County Economic  
Development Authority  
Howard County General Hospital,  
A Member of Johns Hopkins Medicine  
Howard County Historical Society  
Howard County Office of  
Emergency Management  
Howard County Office of the State's  
Attorney  
Johns Hopkins Children's Center  
Johns Hopkins Hospital and  
Health System, Child and Adolescent  
Psychiatry  
Johns Hopkins Hospital and  
Health System, Department of  
Anesthesiology  
Johns Hopkins Hospital and Health  
System, Department of Gynecology  
and Obstetrics



*Inspired by  
the theme,  
Discarded:  
What's Worth  
Saving, students  
created artwork  
in a variety of  
styles and media.*

NSBE Jr., Howard County Chapter  
Prepare for Success, Community  
Action Council of Howard County  
Sri Sathya Sai South Bethesda  
Center  
The Howard Hughes Corporation  
The Kindness Pantry  
The Mall in Columbia  
Waring Mitchell Law Society  
Wilde Lake Interfaith Center

## WILDE LAKE MS

BGE  
Columbia Community Care,  
Equity4HC  
Hess Corporation  
Howard County Library,  
East Columbia Branch  
Howard County Library, Savage  
Branch & STEM Education Center  
Lowe's

Johns Hopkins Hospital and Health  
System, Pharmacology and Molecular  
Sciences  
Johns Hopkins University Applied  
Physics Laboratory  
Johns Hopkins University School of  
Medicine  
Johns Hopkins University,  
Bloomberg School of Public Health  
Katkow Dentistry  
Kit and Kaboodle Productions  
Laurel Children's Clinic  
Law Offices of Ali Kalarestaghi  
Leidos  
Luminus Network for New  
Americans  
Maryland SPCA  
Mastracci Law Offices  
Mays and Associates  
Mediation & Conflict Resolution  
Center

Maryland Department of Natural  
Resources, Sunfish and Students  
Mission19  
Planet Aid  
Prepare for Success, Community  
Action Council of Howard County  
The Kindness Pantry  
University of Maryland Center for  
Environmental Science  
Wilde Lake Community Association

## WORTHINGTON ES

Free Bikes 4 Kidz Maryland  
Howard County Library, Miller Branch  
Okinawan Karate Dojo

Mercy Medical Center  
Merriweather Post Pavilion  
Metropolitan Cardiovascular  
Consultants  
Mt. Airy Animal Hospital  
NASDAQ OMX  
National Family Resiliency Center  
National Institutes of Health  
National Institutes of Health,  
National Cancer Institute  
National Institutes of Health,  
National Institute on Aging  
National Institutes of Standards and  
Technology  
Pam Long Photography  
Parkinson's & Movement Disorders  
Center of Maryland  
Parmar Family & Cosmetic Dentistry  
Pediatric Partners  
Pivot Physical Therapy, River Hill  
Potomac Valley Orthopaedic  
Associates  
Primary Pediatrics  
Private Digital Network Services  
Racktop Systems  
Rehab 2 Perform  
ReStl Designers  
Revive Physical Therapy  
Ridgeview Veterinary Practice  
Root Studio  
Rose Walk  
Ruth Agwuna, M.D.  
Sharp's at Waterford Farm  
Shimadzu Scientific Instruments  
Sivieri Wellness Center  
Sport and Family Physical Therapy  
St. Louis Parish  
State of Maryland, Howard County  
Office of the Public Defender  
Telefactor Robotics  
The Dance Dimension  
The Ember Cast  
Therapeutic & Recreational Riding  
Center  
Transforming Architecture  
Triadelphia Veterinary Clinic  
U.S. Army Research Laboratory  
U.S. Department of Veterans  
Affairs, Rehabilitation Research &  
Development  
UMBC  
UMBC Athletics  
Uniformed Services University of the  
Health Sciences  
University of Maryland Medical  
Center  
University of Maryland School of  
Medicine, Department of Neurology  
University of Maryland School of  
Medicine, Department of Psychiatry  
USGS Patuxent Wildlife Research  
Center  
Varsity Sports Network  
West Friendship Animal Hospital

# CAREER AND TECHNICAL Education

Career and Technical Education offers a variety of programs, either school-based or at the centralized Applications and Research Laboratory (ARL), that prepare students to be successful in a career field of their choosing. CTE programs integrate the strengths of an academic education with the practical benefits of career and technical education. With the guidance of advisors and industry mentors, students have the unique opportunity to explore a career interest in-depth during high school. CTE partners for the 2021–22 school year included:

## PARTNERS

2HB Incorporated  
4 Oaks Physical Therapy  
A P Ventures  
A&G Pharmaceutical  
Advanced Root Canal Specialists of Howard County  
Aida Bistro  
AJO Concrete Construction  
AllCare of Maryland  
Altimate Electric  
Amazon Fulfillment Center, Baltimore  
AMC Theatres  
American Eagle Outfitters  
American Pest  
Ameriprise Financial  
AMMON HEISLER SACHS architects  
Anderson Minuteman Press of Glen Burnie  
Apple Ford  
ARGO Systems  
Aries Scientific  
Associated Builders and Contractors, Baltimore Metropolitan Chapter  
B/A Products Co.  
BEAT Physical Therapy  
BITHGROUP Technologies  
Bob Evans Restaurant, Beaver Run Court  
Bob Evans Restaurant, Benson Drive  
BOLDER food/drink  
BoMark Electric  
Bon Fresco  
Bopat Electric Company  
Bright Minds Foundation  
Brighton Gardens of Columbia  
Brookfield Christian School of Clarksville  
Buffalo Wild Wings  
Burger King, Minstrel Way  
C&M Contracting Services  
Carrabba's Italian Grill  
Celebrate Awards  
Chick-fil-A, Executive Park Drive  
Chick-fil-A, Johns Hopkins Road  
Children First  
Chipotle Mexican Grill, Old Dobbin Lane  
Cisco's Talos Security Intelligence and Research Group  
City Ranch  
Clark Construction Group  
Club SciKidz MD  
Cold Stone Creamery, Richards Valley Road  
Cold Stone Creamery, Twin Rivers Road  
Columbia Academy at Maple Lawn  
Columbia Academy, Thunder Hill  
Columbia Association  
Columbia Association, Columbia Athletic Club  
Corner Bakery Cafe  
Council of the Great City Schools  
Cradlerock Children's Center



*The Academy of Health Professions and more than 20 other Career Academies equip students with professional skills and experience for determining post-secondary plans.*

Cross-Cultural Communications  
CVS Pharmacy, Lynx Lane  
Dakis Service Center  
DARCARS Lexus  
David's Natural Market  
Davis, Agnor, Rapaport & Skalny  
Dawn Acres Angus  
Dick's Sporting Goods  
Dolly's Car Wash  
Domino's Pizza, Baltimore National Pike  
DRD Pool Management  
DSM Nutritional Products  
DTLR  
Dunloggin Veterinary Hospital  
dw taylor associates  
ECS Mid-Atlantic – Baltimore  
Ed-U-Care Learning Center  
Educational Systems Federal Credit Union  
Edwards Performance Solutions  
EFG Enterprises  
Eggspectation  
Elkridge Furnace Inn  
Elkridge Youth Organization  
EN Engineering  
Encore at Turf Valley, A Lorien Community  
Expert Trading Limited  
F. B. Harding  
Fabletics  
FAI Wealth Management  
Federal Communications Commission  
First Evangelical Lutheran Church

Fisher, Collins, & Carter  
Five Guys, Dobbin Center  
Five Guys, Mall in Columbia  
Food Lion, Lisbon Center Drive  
Frisco Tap House  
FX Physical Therapy, Columbia  
Gap Kids  
Gary J. Arthur Community Center at Glenwood  
GEA Process Engineering  
Giant Food, Baltimore National Pike  
Giant Food, Centre Park Drive  
Giant Food, Daybreak Circle  
Giant Food, Dorsey Hall Drive  
Giant Food, Freetown Road  
Giant Food, Marshalee Drive  
Gilbane Building Company  
Glory Days Grill  
Got Electric  
Grotto Pizza  
Grounded Electrical Construction  
Hackground  
Happy Sprouts Learning Center  
Harkins Builders  
Harris Teeter, Guilford Road  
Harris Teeter, Resort Road  
Hawkeye MedTech  
Hawkeye Services  
Hawkins Electric Service  
Hillmuth Certified Automotive  
Hollister Co.  
Horizon Foundation  
Howard Community College  
Howard Community College, Nursing and Allied Health

Howard Community College, Science and Technology Division  
Howard County Center of African American Culture  
Howard County Chamber of Commerce  
Howard County Department of Fire and Rescue Services  
Howard County Department of Public Works  
Howard County Economic Development Authority  
Howard County Education Federal Credit Union  
Howard County Fleet Maintenance  
Howard County Fleet Maintenance, Ridge Road Shop  
Howard County General Hospital, A Member of Johns Hopkins Medicine  
Howard County Housing Commission  
Howard County Human Resources Society  
Howard County Library System  
Howard County Library, Central Branch  
Howard County Library, Glenwood Branch  
Howard County Library, Miller Branch  
Howard County Office of the State's Attorney  
Howard County Office of Veterans and Military Families  
Howard County Office of Workforce Development  
Howard County Office on Aging and Independence, Florence Bain Senior Center  
Howard County Office on Aging and Independence, Longwood 50+ Center  
Howard County Police Department, Youth Division  
Howard County Recreation and Parks  
Humanim  
ICAT Logistics  
IHOP  
Image360 Columbia MD  
In Grand Style  
Independent Electrical Contractors, Chesapeake  
Institute of Marine & Environmental Technology (IMET)  
Jim Coleman Honda  
Jimmy John's  
Johns Hopkins Bayview Medical Center  
Johns Hopkins Hospital and Health System  
Johns Hopkins University Applied Physics Laboratory  
Kaiser Permanente  
Katkow Dentistry  
Katz, Abosch, Windesheim, Gershman & Freedman, P.A.  
Kids Foot Locker

KMASS Solutions  
Kohl's Department Store  
Koto Sake Japanese Steak House  
Ledo Pizza, Baltimore National Pike  
Ledo Pizza, Oakland Mills Road  
Lighthouse Senior Living  
Little Stars Learning Center  
Lorien Harmony Hall Assisted Living  
Lorien Health Services  
Lutheran Village at Miller's Grant  
Main Event Columbia  
Maryland Department of Information Technology  
Maryland Department of Labor, Licensing and Regulation, Maryland Apprenticeship and Training Program  
Maryland Educational Opportunity Center  
Maryland Farm Bureau  
Maryland Innovation Center  
Matthew R. Horowitz, C.P.A.  
Mays and Associates  
McDonald's, Daybreak Circle  
McDonald's, Guilford Road  
McDonald's, Harpers Farm Road  
McDonald's, Lisbon Center Drive  
McDonald's, Maple Lawn  
McDonald's, Snowden River Parkway  
MedStar Health Physical Therapy at Ellicott City  
Mendelson Family Dentistry, PA  
Meridian Anesthesia  
Merriweather Post Pavilion  
Michaels, Long Gate  
Microwave Telemetry  
Millennium Marketing Solutions  
Minnick's  
MOD Pizza  
MOS Creative  
Motherland Goodness: Africa In A Bag  
N.E.A.R Communications  
NASA Goddard Space Flight Center  
National Security Agency  
Negola's Animal Care  
Newborn Brothers Co.  
NinjaBE  
NovaCare Rehabilitation, Centre Park Drive  
obo. Agency  
OCS  
Oh, What A Cake!  
Old Navy, Long Gate  
Orthopaedic Associates of Central Maryland  
Panera Bread Columbia – The Mall in Columbia  
Panera Bread Fulton – Market Place Maple Lawn  
Papa John's, Harpers Farm Road  
Papa John's, Marshalee Drive  
Party City, Old Dobbin Lane  
Patapsco Valley Lawn & Landscape  
Paul J. Gorman Architects  
Pennoni Associates  
PetVet of Clarksville  
Physiotherapy Associates, Laurel Park Drive  
Pie Five Pizza  
Pivot Physical Therapy, Centre Park Drive  
Pivot Physical Therapy, River Hill  
Play It Again Sports  
Potbelly Sandwich Shop  
Preston Country Club for Pets

Prime Manufacturing Technologies  
Pro Wash Auto Spa  
Psych Associates of Maryland  
Putting on the Ritz  
Rebuilding Together Howard County  
ReEmerge  
Regal UA Snowden Square  
Release Your Unconscious  
Residences at Vantage Point  
River Hill Grill  
Rommel Construction  
Ruth Agwuna, M.D.  
Safeway, Harpers Farm Road  
Saini Orthodontics  
Saint Agnes Hospital  
Salazar Catering Services/Boardroom Café  
Salon Tusey  
Science and Technology Corporation  
Shadyside Labradors  
Shapiro & Duncan  
Sidamo Coffee & Tea  
Sidney Kimmel Comprehensive Cancer Center at Johns Hopkins  
Sinai Hospital  
Sky Zone Indoor Trampoline Park  
Somerford Place Alzheimer's Assisted Living Columbia  
Standard Medical Equipment Systems  
Starbucks, Dobbin Road  
Starbucks, Wilde Lake Village Center  
Subway, Washington Boulevard  
Success In Style  
Sun Nurseries  
Sunrise Senior Living of Columbia  
Sykesville Car Service  
T. J. Maxx  
Target  
TeamWorx Security  
Technology Assessment & Transfer  
TEI Electrical Solutions  
The Cheesecake Factory  
The Children's Place  
The Children's SPOT  
The Collaborative Law Group  
The Columbia Bank, Gateway Plaza  
The Fighting Lawyer  
The Food Market  
The Home Depot, Snowden River Parkway  
The Hutt Company  
The Kid's Dentist  
The Kings Contrivance Restaurant  
The Scale People  
The Turn House  
The Walrus Oyster & Ale House  
Tide Creek Financial Group  
Tino's Italian Bistro & Wine Bar  
TLV Tree Farm  
Torti Gallas and Partners  
Touchstone Physical Therapy & Wellness  
Town & Country Auto Repair  
Transforming Architecture  
Tresses Unlimited Salon  
True Sports Physical Therapy  
U.S. Air Force  
U.S. Army  
U.S. Department of Agriculture  
UMBC Center for Cybersecurity  
UMBC College of Engineering and Information Technology  
UMBC College of Natural and Mathematical Sciences

University of Maryland College of Agriculture and Natural Resources  
University of Maryland Medical Center  
University of Maryland School of Medicine  
University of Maryland School of Medicine, Department of Anatomy & Neurobiology  
University of Maryland School of Medicine, Department of Medical and Research Technology  
University of Maryland School of Medicine, Department of Microbiology and Immunology  
University of Maryland School of Medicine, Department of Neurology  
University of Maryland School of Pharmacy  
Uno Pizzeria & Grill  
VCA Lewis Animal Hospital  
Vheda  
Volunteer, Craig Holcomb  
Voya Financial  
Walter Reed Army Institute of Research (WRAIR)  
Wegmans  
Weis Markets, Birmingham Way  
Weis Markets, Monroe Avenue  
Wendy's, Clarksville Pike  
Wendy's, Washington Boulevard  
Whole Foods Market Columbia  
Wilhelm Commercial Builders  
Windsor Electric Company  
Winter Growth, Ruth Keeton House

## ADVISORY COUNCILS

**Academy of Finance**  
Ahrens Team of Keller Williams Realty Centre  
Berger HR Solutions  
Bolton Partners  
Capital One  
Ciena Corporation  
Dale Carnegie & Associates  
Financial Council  
Howard Community College, Business and Computer Systems Division  
Howard County Education Federal Credit Union  
JBG SMITH Properties  
Joseph Stephenson  
Junior Achievement of Central Maryland  
Letzer Enterprises  
Maryland Council on Economic Education  
Morgan Stanley & Co.  
Patuxent Financial Partners  
Sandy Spring Bank, Fulton Branch  
SECU  
Sunset Hotel Group  
T. Rowe Price  
TEDCO  
Volunteer, Bari Anderson  
Volunteer, Jeffrey Levitt  
Volunteer, Josh Katzen  
Volunteer, Shana Bolton  
Volunteer, Timothy Pierce  
Voya Financial

**Academy of Health Professions**  
AAA Physical Therapy  
Brightview Senior Living Columbia  
Glackin Physiotherapy  
Howard Community College, Division of Continuing Education and Workforce Development  
Howard Community College, Health Sciences Division  
Howard County General Hospital, A Member of Johns Hopkins Medicine  
Howard County Office on Aging and Independence, North Laurel 50+ Center  
Ingleside  
Jones & Bartlett Learning  
MedStar Health Physical Therapy at Ellicott City  
NovaCare Rehabilitation, Centre Park Drive  
Performance Physical Therapy and Sports Rehabilitation  
Revive Physical Therapy  
Sunrise Rotary Club of Ellicott City  
The Beacon Institute  
University of Maryland School of Pharmacy

## Agricultural Science

Howard County Economic Development Authority  
Howard County Farm Bureau  
Maryland Agricultural Education Foundation  
Maryland Arborist Association  
Maryland State Department of Education, Division of Career and College Readiness  
Porch View Farm  
University of Maryland College of Agriculture and Natural Resources  
University of Maryland, Extension, Howard County  
Volunteer, Ellie Feaga

## Apprenticeship Maryland

Associated Builders and Contractors, Baltimore Metropolitan Chapter  
Exelon Corporation  
Howard Community College, Division of Continuing Education and Workforce Development  
Howard County Office of Human Resources  
Howard County Office of Workforce Development  
Independent Electrical Contractors, Chesapeake  
Manufacturing Extension Partnership, National Institute of Standards and Technology  
Maryland Department of Labor, Licensing and Regulation, Maryland Apprenticeship and Training Program  
Maryland Innovation Center  
McGraw Hill Financial  
The BWI Business Partnership  
Voya Financial

# CAREER AND TECHNICAL Education continued

## Arts Media and Communications

3Digit Creative  
Howard Community College,  
Arts and Humanities Division  
Howard Community College,  
Science and Technology Division  
Howard County Library System  
Illume Communications  
Loyola University Maryland, Office of  
Marketing and Communications  
Millennium Marketing Solutions  
Phase2 Technology  
Printing & Graphics Association,  
MidAtlantic

## Automotive Technology

Apple Ford  
BMW of Catonsville  
Century Ford of Mt. Airy  
Community College of Baltimore  
County  
Hillmuth Certified Automotive  
Howard County Fleet Maintenance  
Neubauer's Auto Repair  
Snap-On Industrial  
TNT Auto Repair & Towing  
Town & Country Auto Repair  
TPC Racing

## Biotechnology

DSM Nutritional Products  
Emergent Biosolutions  
UMBC College of Natural and  
Mathematical Sciences  
United States Department of  
Agriculture, Agricultural Research  
Service  
University of Maryland School of  
Medicine, Department of  
Biochemistry and Molecular Biology  
University of Maryland School of  
Medicine, Department of  
Microbiology and Immunology  
University of Maryland School of  
Medicine, Department of Neurology

## Career Research and Development

Howard Community College,  
Human Resources Office  
Howard County Human Resources  
Society  
Howard County Library System  
Howard County Office of Workforce  
Development  
Howard County Recreation and Parks  
Junior Achievement of Central  
Maryland  
MakingChange  
Maryland Department of Labor,  
Licensing and Regulation,  
Columbia Workforce Center  
Spectrum HR Solutions  
Woodstock Job Corps Center  
Yolanda Voss Fashion Gallery

## Construction and Development

AIA Baltimore (The American  
Institute of Architects Baltimore  
Chapter)  
Alternative Roofing  
American Contracting &  
Environmental Services  
Anne Arundel Community College,  
Department of Architecture and  
Interior Design  
Armstrong Fluid Technology  
Arundel Cooling & Heating Co.  
Associated Builders and Contractors,  
Baltimore Metropolitan Chapter  
Ayers Saint Gross  
Banta-Campbell Architects  
Buch Construction  
Carrier Enterprise  
Clark Construction Group  
Clark Realty Capital  
Davis & Davis Air Conditioning &  
Heating  
dw taylor associates  
EMJAY Engineering & Construction  
Environmental Systems Associates

Finish Werks  
Fisher, Collins, & Carter  
Grounded Electrical Construction  
Hans-On Services  
Harkins Builders  
Heating & Air Conditioning  
Contractors of Maryland (HACC)  
Heery International  
HMC Incorporated  
Homefix Custom Remodeling,  
Installation Services  
Howard Community College,  
Science and Technology Division  
Howard County Department of  
Public Works  
ISEC  
James A. Wheat & Sons  
Knott Mechanical  
Minnick's  
Morgan State University  
Oak Contracting  
Quality First Home Improvement  
RDH Property Services  
Rommel Construction  
Rutter Project Management  
Smith Mechanical  
Transforming Architecture  
Vectorworks  
Vytex Windows  
Waldon Studio Architects &  
Planners, P.C.  
Williamsburg Homes

**Hospitality and Culinary Studies**  
Aramark  
Barrie House Coffee  
Cafemeetingplace  
Howard Community College, Center  
for Hospitality & Culinary Studies  
Lutheran Village at Miller's Grant  
Marriott International  
MdBio Foundation and MdBioLab  
Ogren Meeting Management  
Oracle  
PM Hotel Group  
Restaurant Association of Maryland  
Education Foundation  
Scoop & Paddle  
Turf Valley Resort  
Volunteer, Chuck Chandler

## Early College Network Security

Alliance Technology Group  
Atlantic Data Forensics  
Booz Allen Hamilton  
Constellation Technologies  
CyberCore Technologies  
EnRich Minds  
Gula Tech Adventures  
Howard Community College,  
Admissions and Advising Office  
Howard County Economic  
Development Authority  
IntelliGenesis  
Johns Hopkins University Applied  
Physics Laboratory  
Northrop Grumman Corporation  
Secure Innovations  
Sofiac  
VersaTech

## Engineering

American Institute of Aeronautics  
and Astronautics  
ASRC Federal Holdings Company  
Bright Minds Foundation  
Howard Astronomical League of  
Central Maryland  
Howard Community College,  
Science and Technology Division  
Johns Hopkins University Applied  
Physics Laboratory  
JTech Corp  
KCI Technologies  
M3D  
MIT Lincoln Laboratory

NASA Goddard Space Flight  
Center  
Northrop Grumman Corporation  
SCS Engineers  
Stanley Black & Decker  
UMBC Department of Mechanical  
Engineering  
UMBC Education Department  
University of Maryland A. James  
Clark School of Engineering,  
Department of Aerospace Engineering  
Volunteer, David O'Callaghan

**Information Technology**  
Altamira Technologies Corporation  
Bright Minds Foundation  
Cisco's Talos Security Intelligence  
and Research Group  
Data Networks  
Howard Community College,  
Business and Computer Systems  
Division  
Howard County Library System  
Johns Hopkins University Applied  
Physics Laboratory  
Leidos  
Red River  
Sofiac  
Towson University Cisco Academy  
Support and Training,  
Center for Professional Studies  
Volunteer, Sreedhar Vedantham

## Junior Reserve Officers' Training Corps Army and Air Force

Air National Guard  
Bowie State University  
National Black Coalition of Federal  
Aviation Employees (NBCFAE)  
National Security Agency

## Teacher Academy of Maryland

Howard Community College, Social  
Sciences/Teacher Education Division  
Howard County Library System  
Howard County Recreation and  
Parks  
Towson University College of  
Education

# STUDENT WELL-BEING

The Student Well-Being Program coordinates prevention and intervention programs and services to support students, parents and schools by addressing the cognitive, behavioral, social, and emotional health and safety needs of all students to maximize achievement. Programs include School Counseling, Pupil Support Services, Psychological Services, Health Services, Home Schooling, and Home and Hospital Teaching. Student achievement services include tutoring, mentoring, career exploration and social and cultural experiences. Partners for 2021–22 included:

A Home of Our Own Howard  
A-OK Mentoring-Tutoring  
African American Community  
Roundtable  
AFRO  
Alpha Kappa Alpha Sorority,  
Iota Lambda Omega Chapter  
Alpha Phi Alpha Fraternity,  
Kappa Phi Lambda Chapter  
Association of Community Services  
of Howard County  
Big Smiles Maryland PC  
Bowie State University  
Bridges to Housing Stability  
Bridgeway Community Church  
Bright Minds Foundation  
Building Families for Children  
Celebration Church  
Changing Destinations: Journey to  
Excellence  
Chapelgate Presbyterian Church  
China – Education Committee of  
Dong Cheng District  
Chinese American Parent  
Association of Howard County  
Chinese Language School of  
Columbia  
Columbia (MD) Alumnae Chapter,  
Delta Sigma Theta Sorority  
Columbia Association  
Community Action Council of  
Howard County  
Community Allies of Rainbow Youth  
Community Foundation of Howard  
County  
Conexiones  
Congruent Counseling Services  
Continental Societies,  
Columbia, Maryland Chapter  
Continental Societies,  
Southeastern Howard/Laurel Chapter  
Enterprise Residential  
FHI Partners  
First Evangelical Lutheran Church  
Free Bikes 4 Kidz Maryland  
Giant Pharmacy  
Gilchrist  
Grand Canyon University  
Grassroots Crisis Intervention Center  
HC DrugFree  
Head Start of Howard County,  
Community Action Council  
Head Start, Dasher Green Center  
Head Start, Old Cedar Lane  
Healthify  
Heritage Housing Partners  
Corporation  
HopeWorks  
Horizon Foundation  
Howard Community College  
Howard Community College,  
Academic Affairs Office  
Howard Community College,  
Center for Service Learning

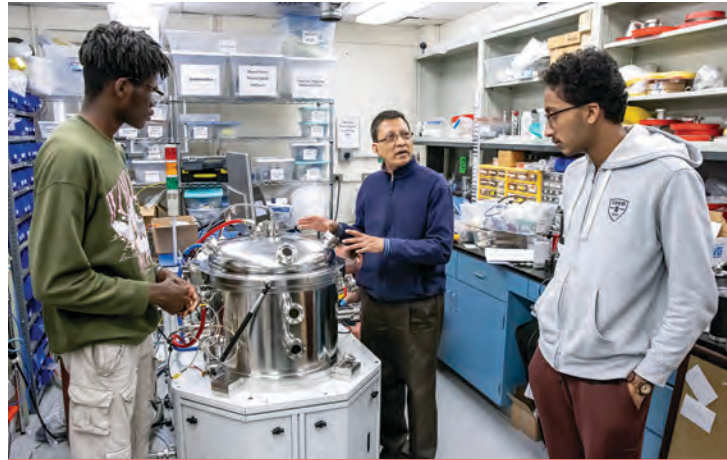


*"On behalf of students and families in Howard County, I am grateful for the collaborative efforts of the county, RTA and HCPSS to enhance access and opportunities for students at no cost."*  
—Superintendent Martirano  
2021

Howard Community College,  
Division of Continuing Education and  
Workforce Development  
Howard County Center of African  
American Culture  
Howard County Chinese School  
Howard County Dental Association  
Howard County Dental Hygienists'  
Association  
Howard County Department of  
Social Services  
Howard County General Hospital,  
A Member of Johns Hopkins Medicine  
Howard County Health Department  
Howard County Health Department,  
Bureau of Behavioral Health  
Howard County Housing and  
Community Development  
Howard County Housing  
Commission  
Howard County Local Children's  
Board  
Howard County MultiService Center  
Howard County Office of Children  
and Families  
Howard County Office of Children  
and Families, Child Care  
Resource Center  
Howard County Office of Consumer  
Protection  
Howard County Police Department  
Howard County Police Department,  
Youth Division  
Howard County Recreation and Parks  
Humanim  
Indian Cultural Association of  
Howard County

Integrative Counseling  
ISAASE (Improving South Asian  
American Students' Experiences)  
Johns Hopkins University Applied  
Physics Laboratory  
Kappa Alpha Psi Fraternity,  
Columbia (MD) Alumni Chapter  
Kaur Foundation  
Korea – The Iksan District Office  
of Education  
Lazarus Foundation  
Leadership Howard County  
Leckner Nissan of Ellicott City  
Leukemia & Lymphoma Society  
LindaBen Foundation  
Long and Foster Real Estate  
Luminus Network for New  
Americans  
Maryland Department of Juvenile  
Services  
Maryland Freestate ChalleNGe  
Academy  
Maryland Higher Education  
Commission  
Maryland Job Corps Admissions  
Center  
Maryland MESA  
Maryland Partnership for Prevention  
Maryland State Department of  
Education  
Mediation & Conflict Resolution  
Center (MCRC)  
Motivation Education  
NAACP, Howard County Branch  
NAMI Howard County

National Center for Children and  
Families  
National Pan-Hellenic Council of  
Howard County  
Neighbor Network  
NSBE Jr., Howard County Chapter  
Parents as Teachers  
Peiyang Chinese School  
PFLAG Columbia – Howard County  
Prepare for Success, Community  
Action Council of Howard County  
Pro Bono Counseling Project  
Rebuilding Together Howard County  
Restorative Justice Partnership  
Salazar Catering Services/  
Boardroom Café  
Sheppard Pratt  
Sleep in Heavenly Peace,  
Howard County Chapter  
Soleil Pharmacy  
Springboard Community Services  
St John Baptist Church  
Success In Style  
The Council of Elders of the Black  
Community of Howard County  
The Links, Incorporated,  
Columbia, Maryland Chapter  
Therapeutic Connections  
Towson University College of  
Health  
Professions  
University of Maryland, Extension,  
Howard County  
Unmatched Athlete  
Veritas Education Leaders  
Zeta Phi Beta Sorority,  
Lambda Gamma Zeta Chapter



*"Students add so much value to our work, including bringing fresh, open minds to the problems and projects we put before them."*

—R.D. Vispute, Founder and CEO Blue Wave Semiconductors

Bright Minds  
Foundation awarded  
18 grants totaling  
\$25,000 for  
innovative  
instructional projects



# SPECIAL EDUCATION

The Special Education Program provides instructional and related services on a countywide basis to address students’ unique learning needs, cultivate independence and promote college and career readiness. The program provides a continuum of services and programs ranging from consultation, specialized instruction for students with Individualized Education Plans, community and family support, job coaching and high school transition programs. Partners for the 2021–22 school year included:

- Alcon Laboratories

Amazon Fulfillment Center, Elkridge

Athletes Serving Athletes

B&O Ellicott City Station Museum

Barnes & Noble, The Mall in Columbia

Bet Yeladim Preschool and Kindergarten

Bethany Church Columbia

Bridges to Housing Stability

Bridgeway Community Church

Brunswick Zone Normandy

Burger King, Centre Park Drive

Chick-fil-A, Mall in Columbia

Clark’s Elioak Farm

Coastal Sunbelt Produce

Colosseum Gym

Columbia Association

Columbia ReStore, Habitat for Humanity of the Chesapeake

Community Ecology Institute, Freetown Farm

D&S Karate Studios

Einstein Bros. Bagels

Ellicott City Health & Rehabilitation Center

Emilia’s Gymnastics

Gary J. Arthur Community Center at Glenwood

Giant Food, Centre Park Drive
- Glory Days Grill

Good Beginnings Child Care and Preschool

Goodwill Industries of the Chesapeake

Goodwill, Ellicott City

Goodwill, Snowden River Parkway

Grace Community Church

Grassroots Day Resource Center

Green Valley Marketplace

Grotto Pizza

Head Start of Howard County, Community Action Council

Head Start, Dasher Green Center

Howard Community College

Howard County Autism Society

Howard County Conservancy

Howard County Department of County Administration

Howard County Department of Social Services

Howard County General Hospital, A Member of Johns Hopkins Medicine

Howard County Health Department

Howard County Library, Central Branch

Howard County Library, Glenwood Branch
- Howard County Recreation and Parks

Howard EcoWorks

Hussman Institute for Autism

Jiffy Lube, Baltimore National Pike

Johns Hopkins University Applied Physics Laboratory

Kiddie Academy of Columbia

Kiddie Academy of Elkridge

Kiddie Academy of Ellicott City

Ledo Pizza, Baltimore National Pike

Ledo Pizza, Daybreak Circle

Ledo Pizza, Oakland Mills Road

Ledo Pizza, Troy Hill Drive

Looney’s Pub

Maple Lawn Homeowners Association

Maryland State Department of Education, Division of Rehabilitation Services, Howard County

McDonald’s, Daybreak Circle

Mt. Zion United Methodist Church

My Pre-K Box

PETCO, Old Dobbin Lane

Planet Fitness, Ellicott City

Play N’ Learn Playground Superstore

Property Management People

Public School Employees’ Child Development Program

Red Bird Bar & Grille
- Robinson Nature Center, Howard County Recreation and Parks

Roger Carter Community Center

Safe Haven Equine Warriors

Safe Haven Farm Equine Learning Center

Sky Zone Indoor Trampoline Park

Special Olympics Howard County

Special Olympics Maryland

Squisito Pizza & Pasta

Studio Dans

Subway, Roxbury Mills Road

The Arc of Howard County

The Bagel Bin & Hoagie House

The Endurance Factory Fitness

The White Oak Tavern

Touché Touchet Bakery & Café, Elkridge

Touché Touchet Bakery, Columbia

Walker’s Tap & Table

Wegmans

Weis Markets, All Saints Road

Weis Markets, Washington Boulevard

Wheelhouse Farm Market

Y in Central Maryland, Dancel Family Center

# STAFF Discount Program

The Staff Discount Program is an initiative whereby local businesses support and recognize the commitment and dedication of HCPSS employees by providing discounts or other special offers for their products and services. The program helps HCPSS attract and retain the best educational staff possible. Businesses that participated in 2021–22 included:

- A Plus Carpet and Flooring

A&G Management Company

Advantage Awards and Engraving

Apple Ford

Apple

AT&T Signature Program

Axis Sport Performance Training

Branches of Yoga

Brick Bodies and Lynne Brick’s Health and Fitness Services

Buric Heating and Air Conditioning

Camp Bow Wow

Candlelight Concert Society

Chiseled Life Gym

Clarity Audiology & Hearing Solutions

Club Z! – In-Home Tutoring Services

Columbia Association

Columbia Tree & Lawn Service

Coreworks Fitness Studio, Columbia

Corporate Shopping Company

Dell Technologies

Enterprise Rent-A-Car
- Fairway Hills Golf Club, Columbia Association

Feet First Sports

Great Sage

Guaranteed Rate

Hilton Garden Inn

Homes for Heroes Affiliate, RE/Max Realty Plus

Inspire Movement Physical Therapy

Integrated Financial Solutions

JK Moving Services

Kaiser Park Apartments & Townhomes

Krav Maga Maryland

Mathnasium of Mount Airy

McCormick Paints

Medieval Times Dinner & Tournament

Mid Atlantic Insurance Solutions

Mike’s Music

Mosquito Joe of Baltimore

Motionlife Chiropractic & Acupuncture
- Move and Change

My Education Discount

My Gym Children’s Fitness Center of Columbia

My Gym Children’s Fitness Center of Crofton

Neighborhood Sun

Next Level Gaming

Premium Auto Glass

Rivers and Roads Counseling

Rocket Mortgage

Salazar Catering Services/ Boardroom Café

Southern Management Corporation, The Residences at Oella Mill

Starfish Vacations

State 7 Realty

Subway, Baltimore National Pike

T-Mobile

The Thrifty Teacher

The Wexley at 100

TicketsatWork
- Verizon FIOS Connections

Viking Benefits & Financial Solutions

Watchdog Krav Maga

Weichert, Realtors® - McKenna & Vane

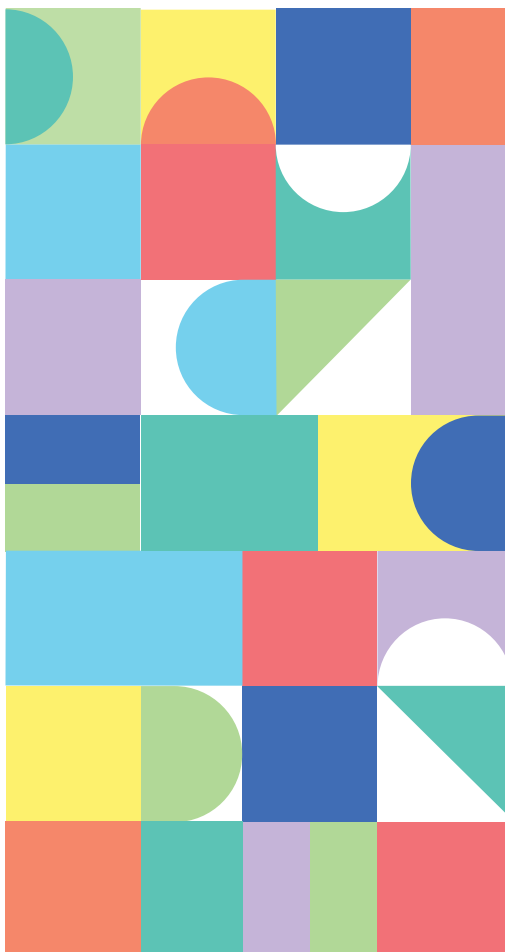
Y in Central Maryland, Dancel Family Center



# Volunteer Opportunities Advisory Committees

Community members are welcome to participate in a variety of HCPSS advisory committees. The advisory committees include parents, community members, students and staff who collaborate to improve education in Howard County.

ADMINISTRATIVE ADVISORY COMMITTEES		
Community Advisory Council to the BOE.....	Email CAC.hcpss@gmail.com or call	
	Public Information .....	410-313-6600
Academic Calendar .....	Brian Bassett.....	410-313-1505
	Monique Lamar .....	410-313-1553
Asian American Pacific Islander .....	Razia Kosi .....	410-313-1254
Attendance Area .....	Timothy Rogers .....	410-313-1554
Instructional Materials Criteria and Review.....	Nancy Czarnecki.....	410-313-6623
Interscholastic Athletics .....	John E. Davis.....	410-313-6630
LGBTQ.....	Kami Wagner.....	410-313-7178
Mental Health Community .....	Cynthia Schulmeyer.....	410-313-7021
Policy Review Committees.....	Antwan Perry .....	410-313-6870
School Health Council.....	Kerrie Wagaman.....	410-313-6812
School Improvement Teams .....	School Principal	
School Naming .....	Anissa Dennis .....	410-313-6607
School Planning.....	Daniel Lubeley.....	410-313-8203
Student Walking Route .....	Brian Nevin.....	410-313-6726
Technology .....	Justin Benedict.....	410-313-6844
Textbook Selection.....	Curriculum Coordinator	
CURRICULAR ADVISORY COMMITTEES		
Bridges Over Howard County .....	Paul Linkins.....	410-313-6627
Career and Technical Education Career Academies .....	Dan Rosewag .....	410-313-6797
Elementary Curriculum .....	Ebony Langford-Brown ...	410-313-6665
English .....	Nancy Czarnecki.....	410-313-6623
Fine Arts (Art, Dance, Theater) .....	Gino Molfino .....	410-313-6634
Gifted and Talented .....	Debbie Blum.....	410-313-6800
Instructional Technology and Library Media .....	Melissa Daggett .....	410-313-7043
Mathematics.....	Jon Wray .....	410-313-6635
Science .....	Naté Hall .....	410-313-1553
Social Studies (Elementary).....	Kimberly Eggborn .....	410-313-5678
(Secondary) .....	C. Renee Bos.....	410-313-7489
World Languages .....	Kimberly Banks.....	410-313-5663
SUPERINTENDENT ADVISORY COMMITTEES		
Diversity, Equity and Inclusion Advisory Group .....		410-313-1542
Program Innovation Advisory Board .....	LaRee Siddiqui.....	410-313-6608
Special Education Advisory Council .....	Terri Savage.....	410-313-6656



**PARTNERSHIPS OFFICE**  
10910 Clarksville Pike, Ellicott City, MD 21042  
[www.hcpss.org/about-us/partnerships/](http://www.hcpss.org/about-us/partnerships/)  
[partnerships@hcpss.org](mailto:partnerships@hcpss.org)

*For more info on HCPSS  
Partnerships, go to:*



The Howard County Public School System does not discriminate on the basis of race, color, creed, national origin, immigration status, religion, physical, mental, or educational disability, pregnancy, age, gender, gender expression, gender identity, genetic information, sexual orientation, marital status, veteran status or socioeconomic status in its educational programs; including co-curricular and extracurricular activities, in the workplace or in hiring practices. The following person has been designated to handle inquiries regarding the non-discrimination policies: Manager of Equity Assurance, Howard County Public School System, 10910 Clarksville Pike, Ellicott City, MD 21042, 410-313-6654 (phone). For further information on notice of non-discrimination, visit <https://ocras.ed.gov/contact-ocr> for the address and phone number of the office that serves your area, or call 1-800-421-3481.